

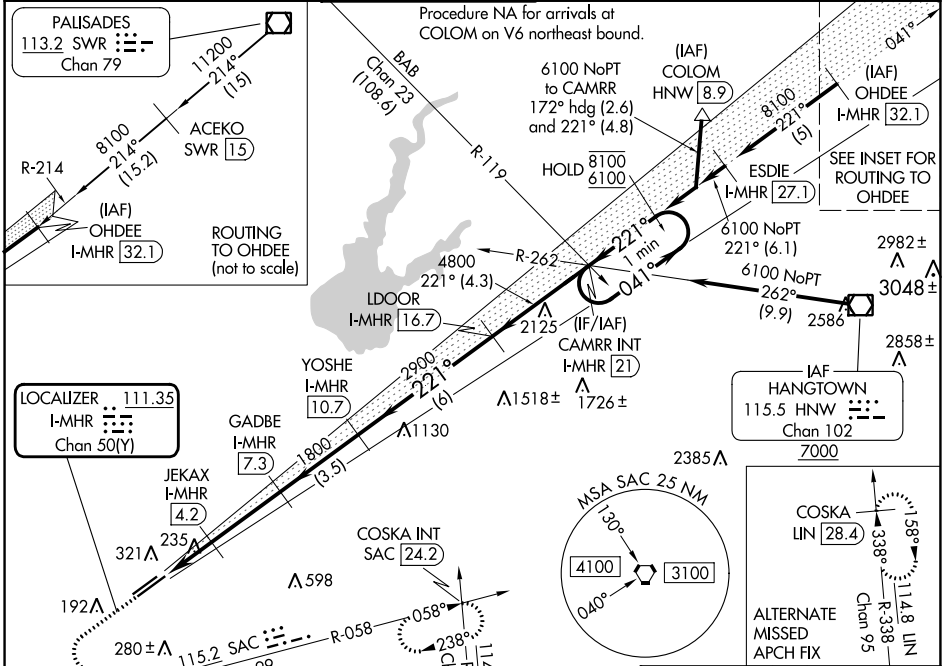
LOC/DME I-MHR 111.35 Chan 50(Y)	APP CRS 221°	Rwy Idg TDZE Apt Elev	7000 98 98
--	------------------------	-----------------------------	---------------------------------------

ILS Z or LOC Z RWY 22L

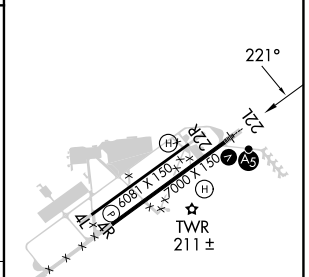
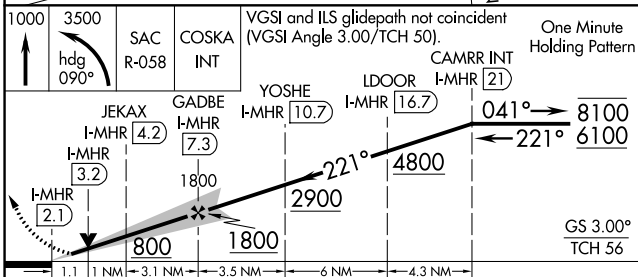
SACRAMENTO MATHER (MHR)

DME required for LOC only.		MALS R	MISSED APPROACH: Climb to 1000, then climbing left turn to 3500 on heading 090° and SAC VORTAC R-058 to COSKA INT/ SAC 24.2 DME and hold, continue climb-in-hold to 3500.
⚠ For inop ALS, increase S-ILS Cat E visibility to RVR 4000 and S-LOC Cat C/D/E visibility to RVR 6000. Circling NA northwest of Rwy 4R-22L. *RVR 1800 authorized with use of FD or AP or HUD to DA (NA when using Sacramento Exec altimeter setting).			

ATIS 118.325	NORCAL APP CON 127.4 317.5	MATHER TOWER * 120.65 (CTAF) 282.25	GND CON 121.85 307.9	CLNC DEL 121.85 307.9	UNICOM 122.95
------------------------	--------------------------------------	---	--------------------------------	---------------------------------	-------------------------



ELEV 98	TDZE 98
---------	---------



CATEGORY	A	B	C	D	E
S-ILS 22L*	298/24 200 (200-½)				
S-LOC 22L	500/24	402 (500-½)	500/40	402 (500-¾)	
CIRCLING	560-1	462 (500-1)	600-1½ 502 (600-1½)	800-2¼ 702 (800-2¼)	800-2½ 702 (800-2½)

MIRL Rwy 4L-22R	Ⓚ
HIRL Rwy 4R-22L	Ⓚ

SW-2, 11 JUL 2024 to 08 AUG 2024

SW-2, 11 JUL 2024 to 08 AUG 2024