


# RNAV (RNP) Z RWY 35L

WILL ROGERS WORLD (OKC)

APP CRS <b>356°</b>	Rwy Idg <b>9800</b>
	TDZE <b>1276</b>
	Apt Elev <b>1296</b>

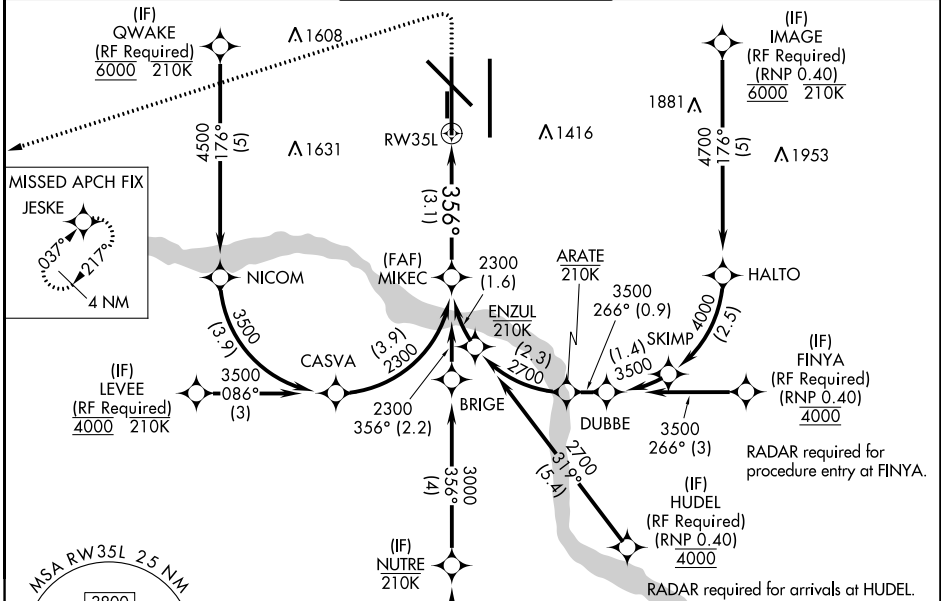
**ASR** For uncompensated Baro-VNAV systems, procedure NA below -12°C (11°F) or above 54°C (130°F). GPS required. Simultaneous approach authorized with Rwy 35R. Use of FD or AP providing RNAV track guidance required during simultaneous operations. For inop ALS, increase RNP 0.30 all Cats visibility to 1/4 SM.

**MALSR**



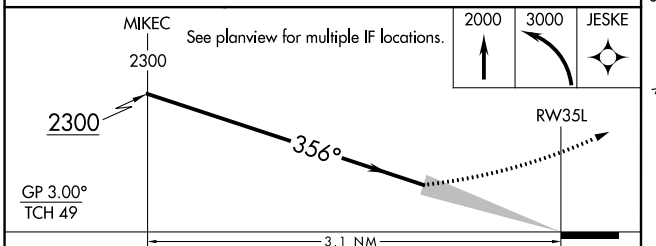
**MISSED APPROACH:** Climb to 2000 then climbing left turn to 3000 direct JESKE and hold.

D-ATIS <b>125.85</b>	OKE CITY APP CON <b>124.6 266.8</b>	ROGERS TOWER <b>119.35 269.45</b>	GND CON <b>121.9 348.6</b>	CLNC DEL <b>124.35</b>
-------------------------	--	--------------------------------------	-------------------------------	---------------------------



**ELEV 1296** **TDZE 1276**

REIL Rwy 13 and 31  
 TDZ/CL Rwy 35R  
 MIRL Rwy 13-31  
 HIRL Rwy 17L-35R and 17R-35L



CATEGORY	A	B	C	D
RNP 0.30 DA	1646/38		370 (400-3/4)	

**AUTHORIZATION REQUIRED**

**WILL ROGERS WORLD (OKC)**

**RNAV (RNP) Z RWY 35L**

SC-1, 11 JUL 2024 to 08 AUG 2024