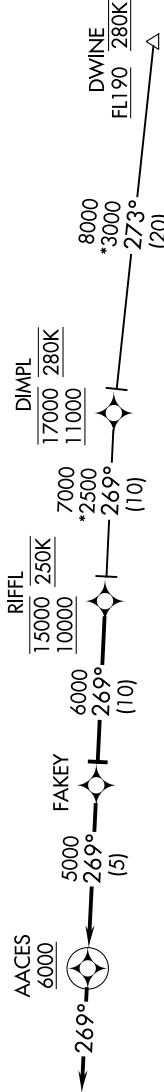


RIFFL THREE ARRIVAL (RNAV)

OKC D-ATIS
125.85
OKE CITY APP CON
124.2 336.4



NOTE: RADAR required.
NOTE: RNAV 1.
NOTE: DME/DME/IRU or GPS required.

ARRIVAL ROUTE DESCRIPTION

DIMPL TRANSITION (DIMPL.RIFL3)
DWINE TRANSITION (DWINE.RIFL3)

From RIFFL on track 269° to FAKEY.

LANDING RWYS 17L/R, 35L/R: From FAKEY on track 269° to cross AACES at or above 6000, then on track 269°. Expect RADAR vectors to final approach course.

NOTE: Chart not to scale.

RIFFL THREE ARRIVAL (RNAV)