

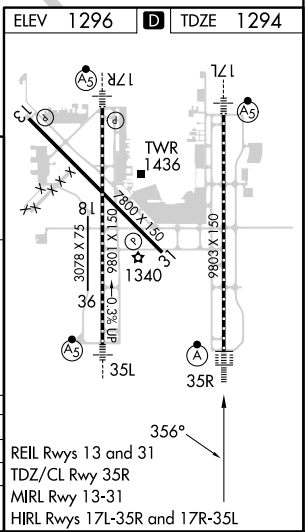
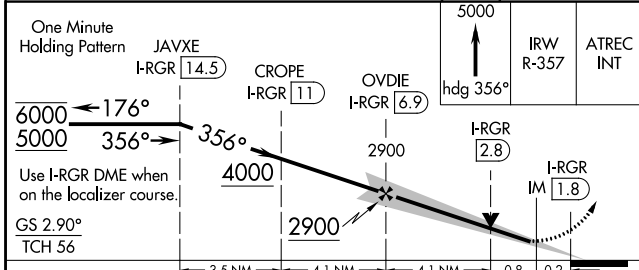
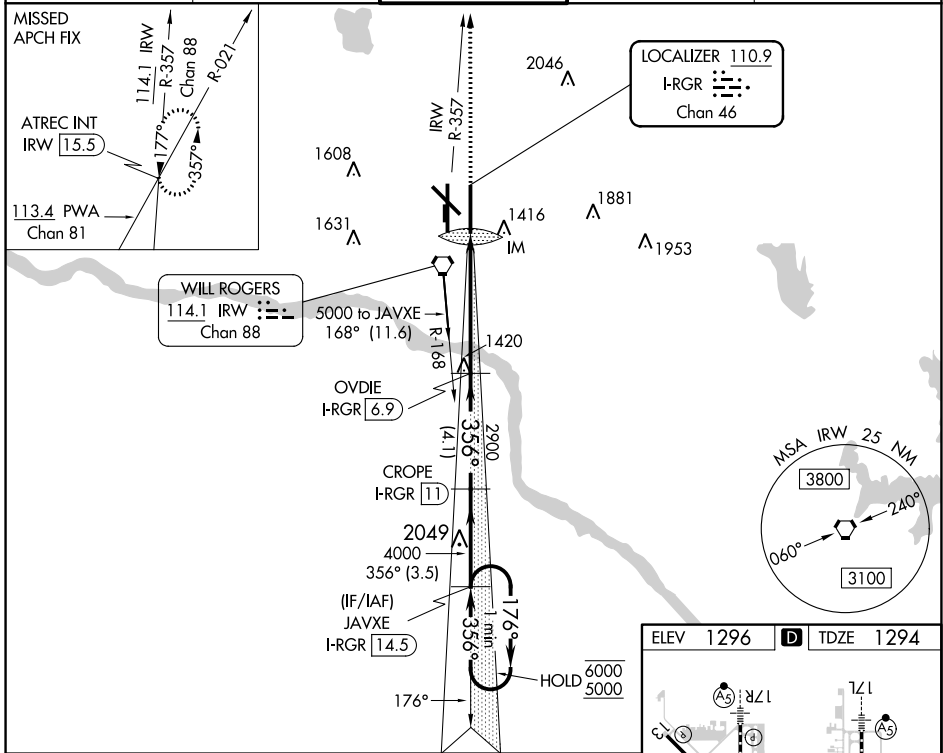
LOC/DME I-RGR <b>110.9</b> Chan 46	APP CRS <b>356°</b>	Rwy Idg <b>9802</b> TDZE <b>1294</b> Apt Elev <b>1296</b>
--	------------------------	---

# ILS or LOC RWY 35R

WILL ROGERS WORLD (OKC)

DME required.	ALSIF-2	MISSED APPROACH: Climb to 5000 on heading 356° and on IRW VORTAC R-357 to ATREC INT/IRW 1.5.5 DME and hold, continue climb-in-hold to 5000.
<p>Simultaneous approach authorized. For inop ALS, increase S-ILS 35R Cat E visibility to RVR 4000 and S-LOC 35R Cats C/D/E visibility to RVR 5500.</p> <p>ASR</p>		

D-ATIS <b>125.85</b>	OKE CITY APP CON <b>124.6 266.8</b>	ROGERS TOWER <b>119.35 269.45</b>	GND CON <b>121.9 348.6</b>	CLNC DEL <b>124.35</b>
-------------------------	--	--------------------------------------	-------------------------------	---------------------------



CATEGORY	A	B	C	D	E
S-ILS 35R	1494/18 200 (200-½)				
S-LOC 35R	1640/24 346 (400-½) 1640/30 346 (400-¾)				
CIRCLING	1740-1 444 (500-1)	1760-1 464 (500-1)	1960-1¾ 664 (700-1¾)	2000-2¼ 704 (800-2¼)	2240-3 944 (1000-3)

REIL Rwy 13 and 31

TDZ/CL Rwy 35R

MIRL Rwy 13-31

HIRL Rwy 17L-35R and 17R-35L

SC-1, 11 JUL 2024 to 08 AUG 2024

SC-1, 11 JUL 2024 to 08 AUG 2024