

VORTAC HLN <b>117.7</b> Chan <b>124</b>	APP CRS <b>270°</b>	Rwy Idg TDZE Apt Elev <b>N/A</b> <b>N/A</b> <b>3877</b>
---	------------------------	--

# VOR-B

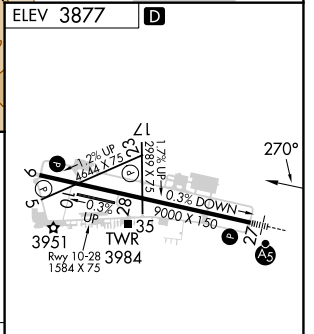
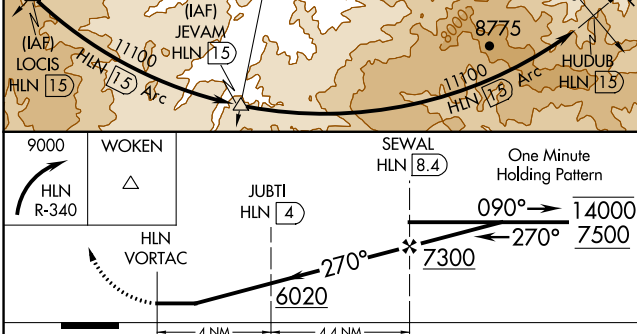
HELENA RGNL (HLN)

DME required.

**⚠** Circling NA to Rwys 10 and 28. Circling NA for Cat D south of Rwy 9-27. Circling Rwy 5, 23, 35 NA at night. Rwy 5, 23, 35 helicopter visibility reduction below 1 SM NA. DME Arc to final approach course required for turbojet aircraft.  
**⚠** -17°C  
 Holding at SEWAL authorized for Cat A and B aircraft only.

MISSED APPROACH: Climbing right turn to 9000 on HLN VORTAC R-340 to WOKEN INT/GTF 37.7 DME and hold.

ATIS <b>120.4</b>	HELENA APP CON * <b>119.5 229.4</b>	HELENA TOWER * <b>118.3 (CTAF) 257.8</b>	GND CON <b>121.9</b>	UNICOM <b>122.95</b>
----------------------	--	---	-------------------------	-------------------------



CATEGORY	A	B	C	D
<b>C</b> CIRCLING	4760-1¼ 883 (900-1¼)	4800-1¼ 923 (1000-1¼)	6000-3	2123 (2200-3)

REIL Rwys 9, 17, and 35  
 MIRL Rwys 5-23 and 17-35  
 HIRL Rwy 9-27

NW-1, 11 JUL 2024 to 08 AUG 2024

NW-1, 11 JUL 2024 to 08 AUG 2024