

LOC I- HLN	APP CRS 091°	Rwy Idg TDZE Apt Elev	N/A N/A 3877
-------------------	---------------------	-----------------------	---------------------------

LOC BC-C

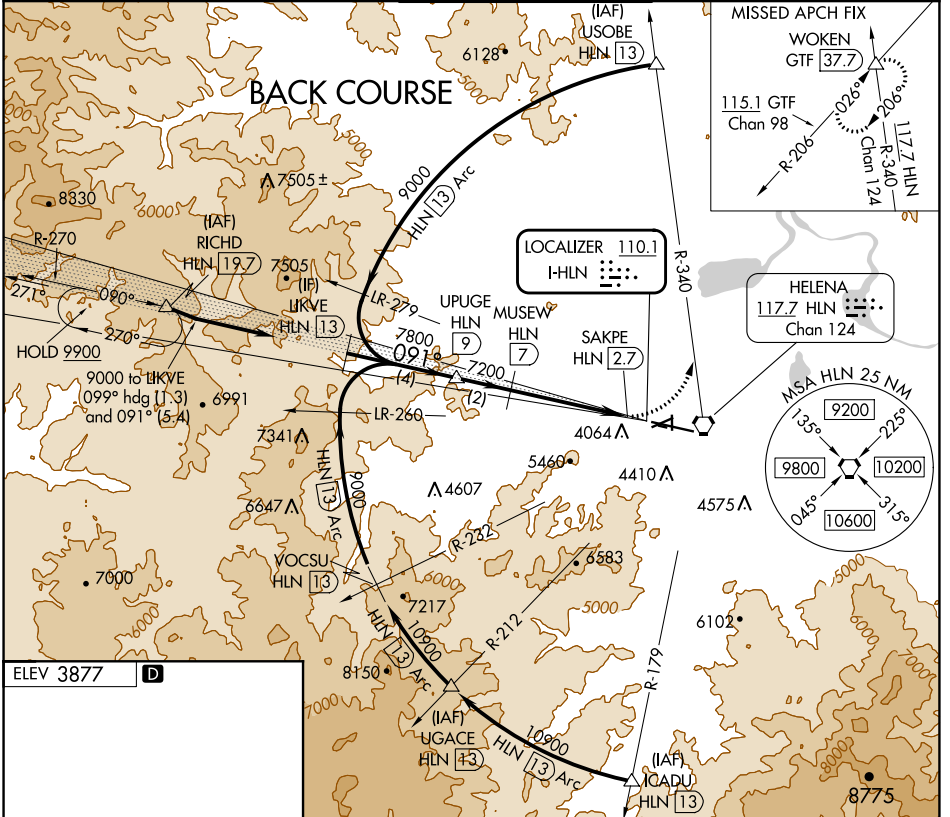
HELENA RGNL (HLN)

DME required.

⚠ Circling NA to Rwys 10 and 28. Circling Rwy 5, 23, 35 NA at night.
⚠ DME from HLN VORTAC. Simultaneous reception of I-HLN and HLN DME required. Rwy 5, 23, 35 helicopter visibility reduction below 1 SM NA.
⚠ -17°C

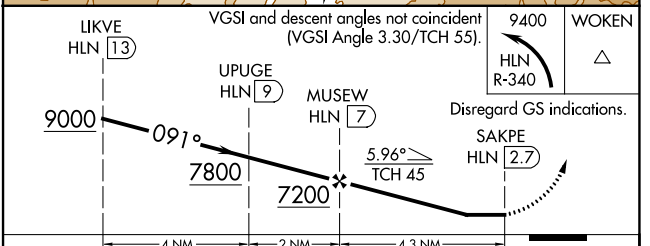
MISSED APPROACH: Climbing left turn to 9400 on HLN VORTAC R-340 to WOKEN INT/GTF 37.7 DME and hold, continue climb-in-hold to 9400.

ATIS 120.4	HELENA APP CON * 119.5 229.4	HELENA TOWER * 118.3 (CTAF) 257.8	GND CON 121.9	UNICOM 122.95
-------------------	-------------------------------------	--	----------------------	----------------------



NW-1, 11 JUL 2024 to 08 AUG 2024

NW-1, 11 JUL 2024 to 08 AUG 2024



REIL Rws 9, 17, and 35
 MIRL Rws 5-23 and 17-35
 HIRL Rwy 9-27

CATEGORY	A	B	C	D
C CIRCLING	5140-1¼ 1263 (1300-1¼)	5140-1½ 1263 (1300-1½)	6000-3 2123 (2200-3)	NA