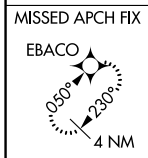
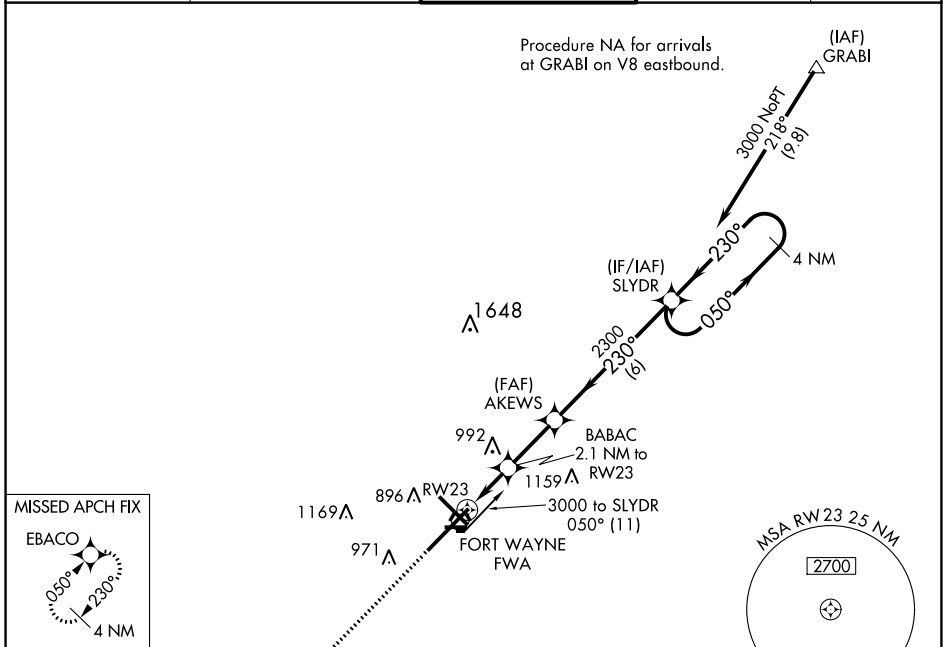


WAAS CH <b>69599</b> <b>W23A</b>	APP CRS <b>230°</b>	Rwy Idg <b>11981</b> TDZE <b>799</b> Apt Elev <b>815</b>
--	------------------------	--

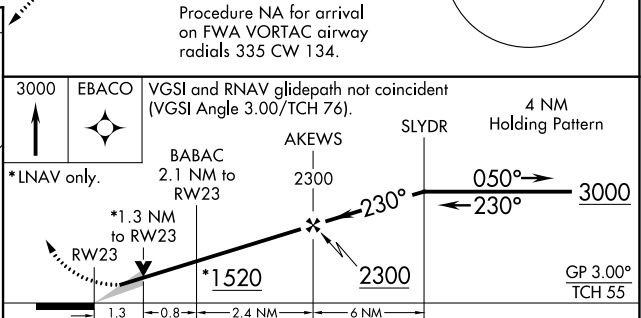
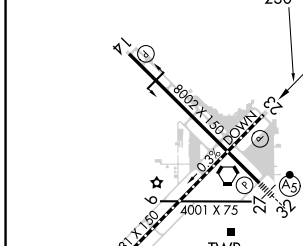
# RNAV (GPS) RWY 23

FORT WAYNE INTL (FWA)

For uncompensated Baro-VNAV systems, LNAV/VNAV NA below -16°C (4°F) or above 47°C (116°F). DME/DME RNP-0.3 NA. ASR		MISSED APPROACH: Climb to 3000 direct EBACO and hold.		
ATIS <b>121.25 360.825</b>	FORT WAYNE APP CON <b>127.2 284.6</b>	FORT WAYNE TOWER <b>119.1 269.325</b>	GND CON <b>121.9 348.6</b>	CLNC DEL <b>124.75</b>



ELEV 815	<b>D</b>	TDZE 799
----------	----------	----------



CATEGORY	A	B	C	D	E
LPV DA	1053/40		254 (300-¾)		
LNAV/VNAV DA	1230-1⅜		431 (500-1⅝)		
LNAV MDA	1300/55 501 (500-1)		1300-1⅜ 501 (500-1⅝)		
<b>C</b> CIRCLING	1300-1 485 (500-1)		1420-1¾ 605 (700-1¾)	1520-2¼ 705 (800-2¼)	1520-2½ 705 (800-2½)

EC-2, 11 JUL 2024 to 08 AUG 2024

EC-2, 11 JUL 2024 to 08 AUG 2024