

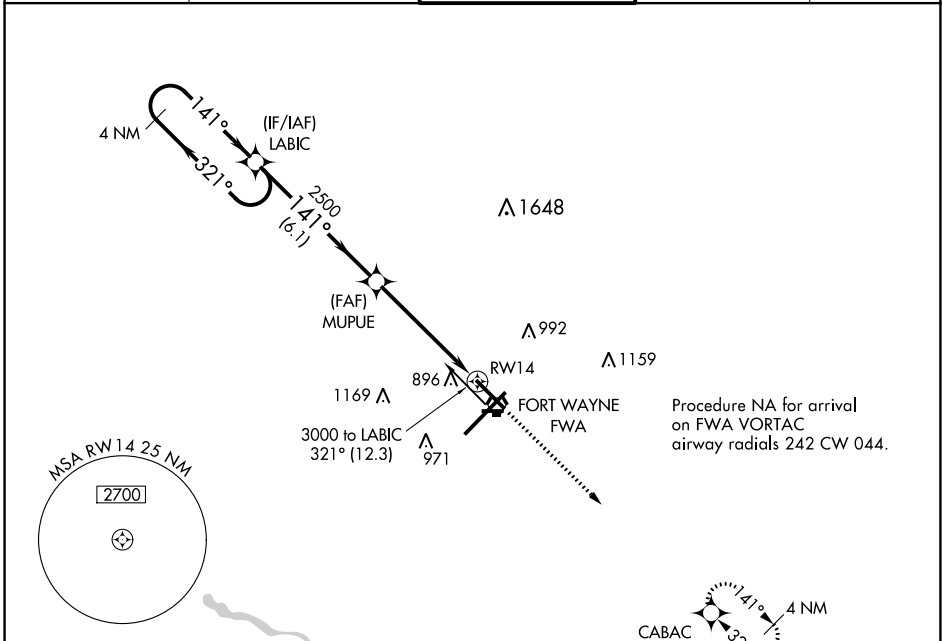
WAAS CH <b>86417</b> <b>W14A</b>	APP CRS <b>141°</b>	Rwy Idg TDZE Apt Elev	<b>8001</b> <b>802</b> <b>815</b>
--	------------------------	-----------------------------	---

# RNAV (GPS) RWY 14

FORT WAYNE INTL (FWA)

<b>ASR</b>	For uncompensated Baro-VNAV systems, LNAV/VNAV NA below -16°C (4°F) or above 47°C (116°F). DME/DME RNP-0.3 NA.	MISSED APPROACH: Climb to 3000 direct CABAC and hold.
------------	--	---

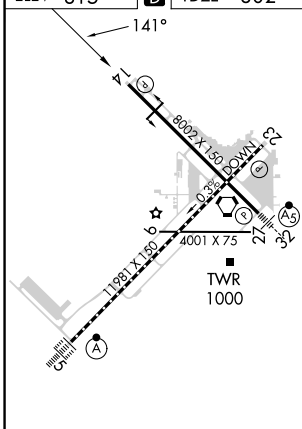
ATIS <b>121.25 360.825</b>	FORT WAYNE APP CON <b>127.2 284.6</b>	FORT WAYNE TOWER <b>119.1 269.325</b>	GND CON <b>121.9 348.6</b>	CLNC DEL <b>124.75</b>
-------------------------------	--	--	-------------------------------	---------------------------



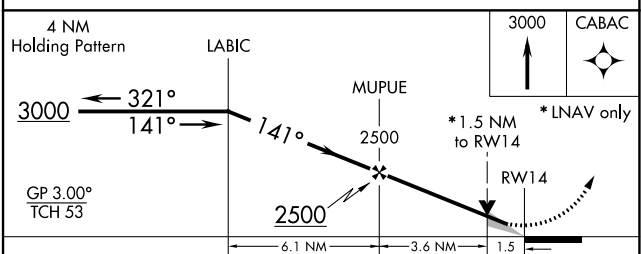
EC-2, 11 JUL 2024 to 08 AUG 2024

EC-2, 11 JUL 2024 to 08 AUG 2024

ELEV <b>815</b>	<b>D</b>	TDZE <b>802</b>
-----------------	----------	-----------------



TDZ/CL Rwy 5  
REIL Rws 14 and 23  
HIRL Rws 5-23 and 14-32



CATEGORY	A	B	C	D
LPV DA		1002- <sup>3</sup> / <sub>4</sub>	200 (200- <sup>3</sup> / <sub>4</sub> )	
LNAV/VNAV DA		1199-1 <sup>1</sup> / <sub>4</sub>	397 (400-1 <sup>1</sup> / <sub>4</sub> )	
LNAV MDA	1320-1	518 (600-1)	1320-1 <sup>3</sup> / <sub>8</sub>	518 (600-1 <sup>3</sup> / <sub>8</sub> )
<b>C</b> CIRCLING	1320-1	505 (600-1)	1420-1 <sup>3</sup> / <sub>4</sub> 605 (700-1 <sup>3</sup> / <sub>4</sub> )	1520-2 <sup>1</sup> / <sub>4</sub> 705 (800-2 <sup>1</sup> / <sub>4</sub> )