

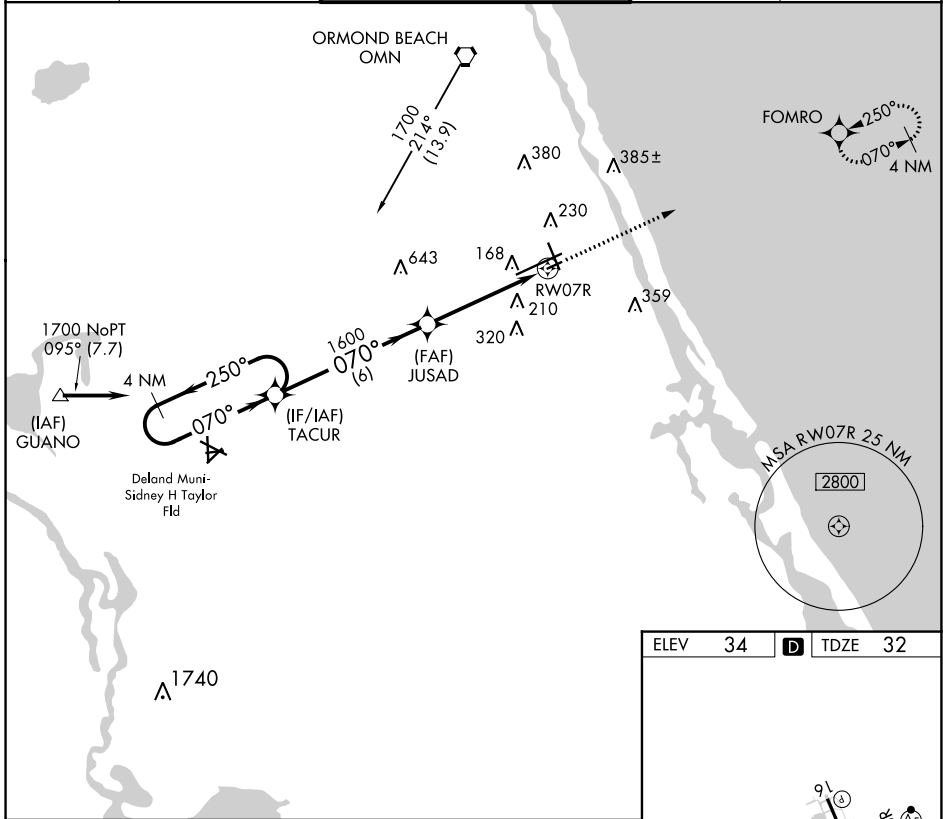
APP CRS	Rwy Idg	<b>3195</b>
<b>070°</b>	TDZE	<b>32</b>
	Apt Elev	<b>34</b>

# RNAV (GPS) RWY 7R

DAYTONA BEACH INTL (DAB)

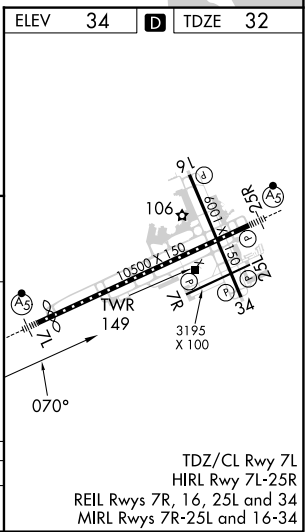
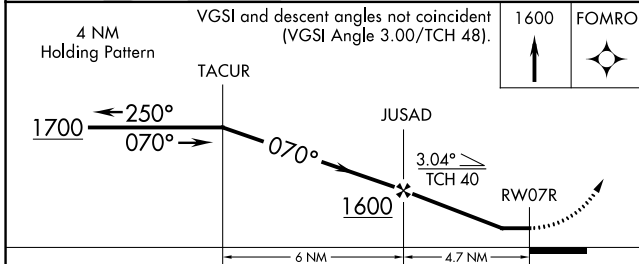
RNP APCH.	MISSED APPROACH: Climb to 1600 direct FOMRO WP and hold.
Rwy 7R helicopter visibility reduction below 3/4 SM NA.	

ATIS <b>132.875</b>	DAYTONA APP CON <b>125.8 269.075</b>	DAYTONA TOWER <b>120.7 257.8</b>	GND CON <b>121.9 348.6</b>	CLNC DEL <b>119.3</b>
------------------------	---	-------------------------------------	-------------------------------	--------------------------



SE-3, 11 JUL 2024 to 08 AUG 2024

SE-3, 11 JUL 2024 to 08 AUG 2024



CATEGORY	A	B	C	D
LNAV MDA	480-1	448 (500-1)	480-1 1/4 448 (500-1 1/4)	NA