

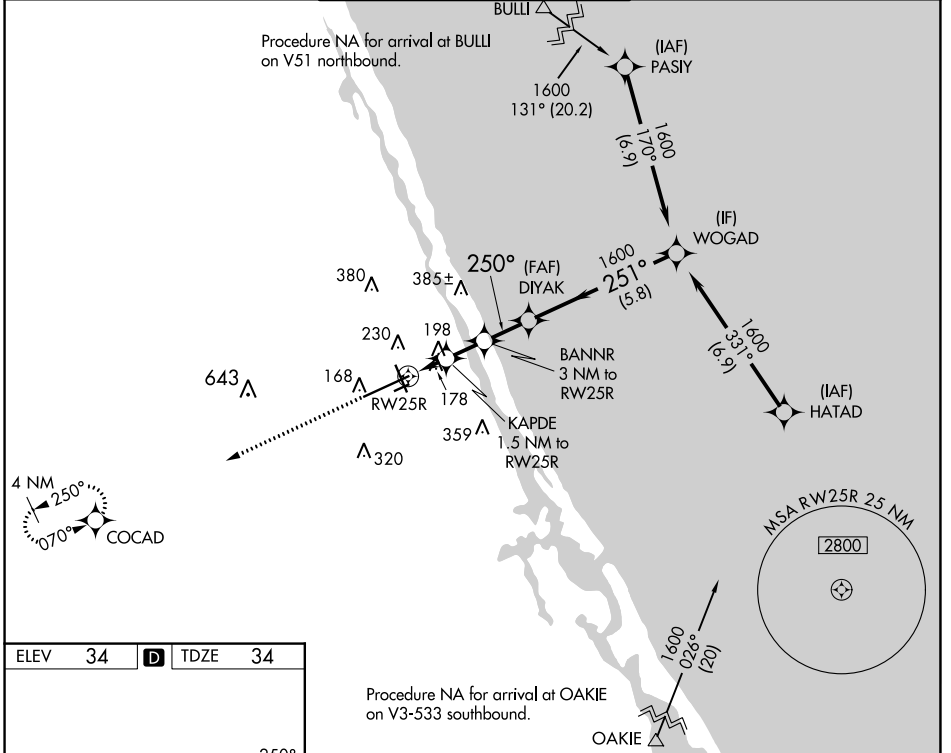
WAAS CH 77533 W25A	APP CRS 250°	Rwy Idg 10293 TDZE 34 Apt Elev 34
--	------------------------	--

RNAV (GPS) RWY 25R

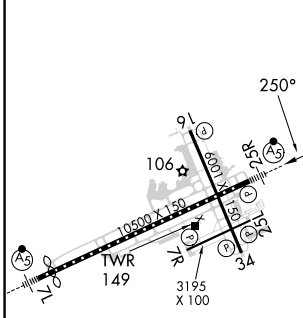
DAYTONA BEACH INTL (DAB)

DME/DME RNP-0.3 NA.		MALSR 	MISSED APPROACH: Climb to 1700 direct COCAD and hold.	
---------------------	--	-----------	---	--

ATIS 132.875	DAYTONA APP CON 125.8 269.075	DAYTONA TOWER 120.7 257.8	GND CON 121.9 348.6	CLNC DEL 119.3
------------------------	---	-------------------------------------	-------------------------------	--------------------------

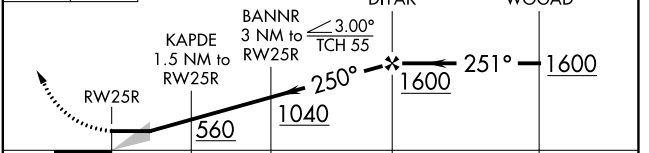


ELEV 34	D	TDZE 34
---------	----------	---------



Procedure NA for arrival at OAKIE on V3-533 southbound.

1700 COCAD VGSI and descent angles not coincident (VGSI Angle 3.00/TCH 72)



		A	B	C	D
CATEGORY					
LP	MDA	440- ¹ / ₂	407 (500- ¹ / ₂)	440- ³ / ₄	407 (500- ³ / ₄)
LNAV	MDA	460- ¹ / ₂	426 (500- ¹ / ₂)	460- ³ / ₄	426 (500- ³ / ₄)
C	CIRCLING	540-1	506 (600-1)	680- ¹ / ₄ 646 (700- ¹ / ₄)	700-2 666 (700-2)

TDZ/CL Rwy 7L
HIRL Rwy 7L-25R
MIRL Rwys 7R-25L and 16-34
REIL Rwys 7R, 16, 25L and 34

SE-3, 11 JUL 2024 to 08 AUG 2024

SE-3, 11 JUL 2024 to 08 AUG 2024