

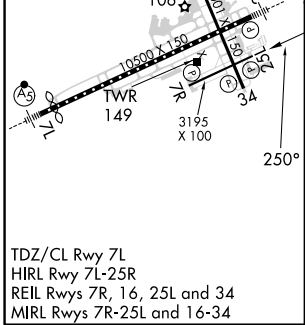
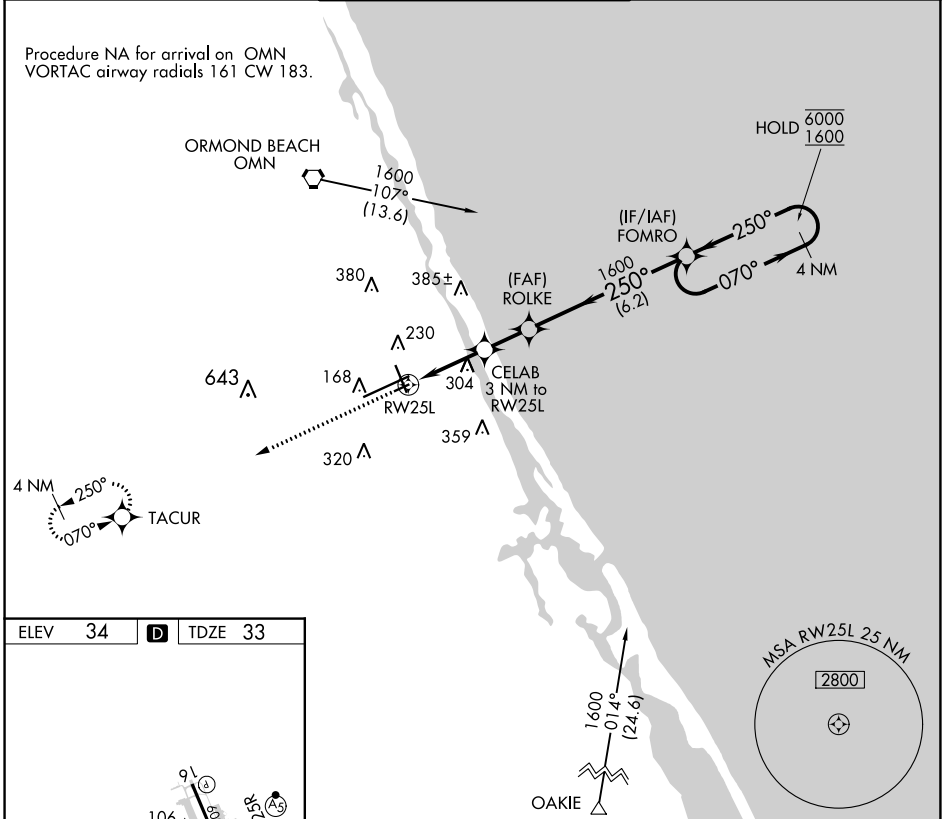
| | | |
|-------------|----------|-------------|
| APP CRS | Rwy Idg | 3195 |
| 250° | TDZE | 33 |
| | Apt Elev | 34 |

RNAV (GPS) RWY 25L

DAYTONA BEACH INTL (DAB)

| | | | |
|--|--|---|--|
| RNP APCH-GPS. | | MISSED APPROACH: Climb to 1700 direct TACUR and hold. | |
| ▼ Rwy 25L helicopter visibility reduction below 3/4 SM NA. | | | |

| | | | | |
|----------------|----------------------|--------------------|--------------------|--------------|
| ATIS | DAYTONA APP CON | DAYTONA TOWER | GND CON | CLNC DEL |
| 132.875 | 125.8 269.075 | 120.7 257.8 | 121.9 348.6 | 119.3 |



| | | | | |
|--|--------|-------------|------------------------|----------------------|
| 1700 | TACUR | ROLKE | FOMRO | 4 NM Holding Pattern |
| ↑ | ✧ | ✧ | ✧ | ✧ |
| 1020 | 1600 | 1600 | 6000 | 1600 |
| 1.5 NM to RW25L | 1.5 NM | 1.8 NM | 6.2 NM | |
| CELAB 3.04° 3 NM to TCH 32 RW25L | | | | |
| VGSi and descent angles not coincident (VGSi Angle 3.00/TCH 44). | | | | |
| CATEGORY | A | B | C | D |
| LNAV MDA | 560-1 | 527 (600-1) | 560-1½ 527 (600-1½) | NA |

SE-3, 11 JUL 2024 to 08 AUG 2024

SE-3, 11 JUL 2024 to 08 AUG 2024