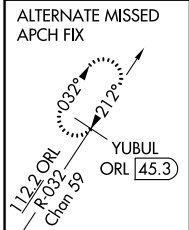
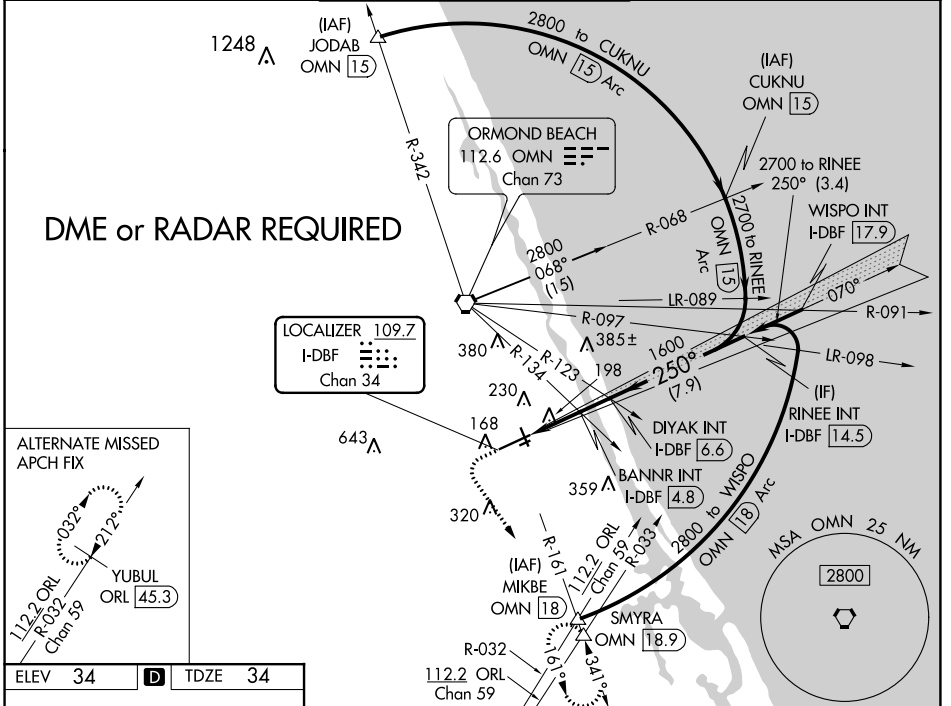


LOC/DME I-DBF <b>109.7</b> Chan 34	APP CRS <b>250°</b>	Rwy Idg TDZE <b>34</b> Apt Elev <b>34</b>	<b>10293</b>
--	------------------------	--	--------------

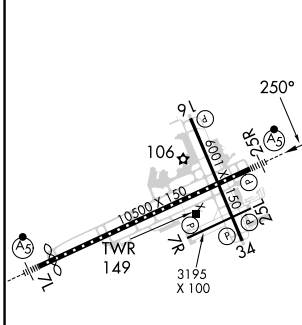
# ILS or LOC RWY 25R

## DAYTONA BEACH INTL (DAB)

<b>ATIS</b> <b>132.875</b>	<b>DAYTONA APP CON</b> <b>125.8 269.075</b>	<b>DAYTONA TOWER</b> <b>120.7 257.8</b>	<b>GND CON</b> <b>121.9 348.6</b>	<b>CLNC DEL</b> <b>119.3</b>
-------------------------------	--	--	--------------------------------------	---------------------------------

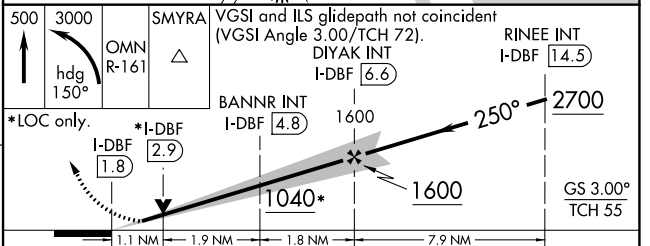


ELEV 34	<b>D</b>	TDZE 34
---------	----------	---------



TDZ/CL Rwy 7L  
HIRL Rwy 7L-25R  
MIRL Rws 7R-25L and 16-34  
REIL Rws 7R, 16, 25L and 34

FAF to MAP 4.8 NM					
Knots	60	90	120	150	180
Min:Sec	4:48	3:12	2:24	1:55	1:36



CATEGORY	A	B	C	D
S-ILS 25R	234-1/2		200 (200-1/2)	
S-LOC 25R	1040-3/4 1006 (1100-3/4)	1040-1 1006 (1100-1)	1040-2 1/2	1006 (1100-2 1/2)
<b>C</b> CIRCLING	1040-1 1/4 1006 (1100-1 1/4)	1040-1 1/2 1006 (1100-1 1/2)	1040-3	1006 (1100-3)
BANNR FIX MINIMUMS (DUAL VOR RECEIVERS or DME REQUIRED)				
S-LOC 25R	440-1/2	406 (500-1/2)	440-3/4	406 (500-3/4)
<b>C</b> CIRCLING	540-1	506 (600-1)	680-1 1/4 646 (700-1 1/4)	700-2 666 (600-2)

SE-3, 11 JUL 2024 to 08 AUG 2024

SE-3, 11 JUL 2024 to 08 AUG 2024