

WAAS CH 77732 W18A	APP CRS 177°	Rwy Idg TDZE Apt Elev	4000 1080 1088
--	------------------------	-----------------------------	---

RNAV (GPS) RWY 18

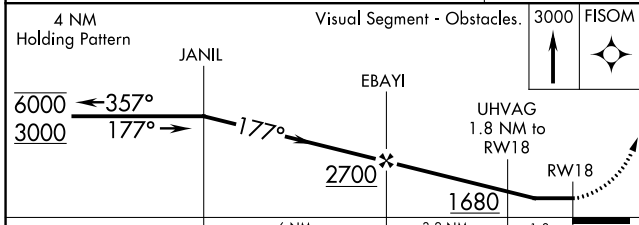
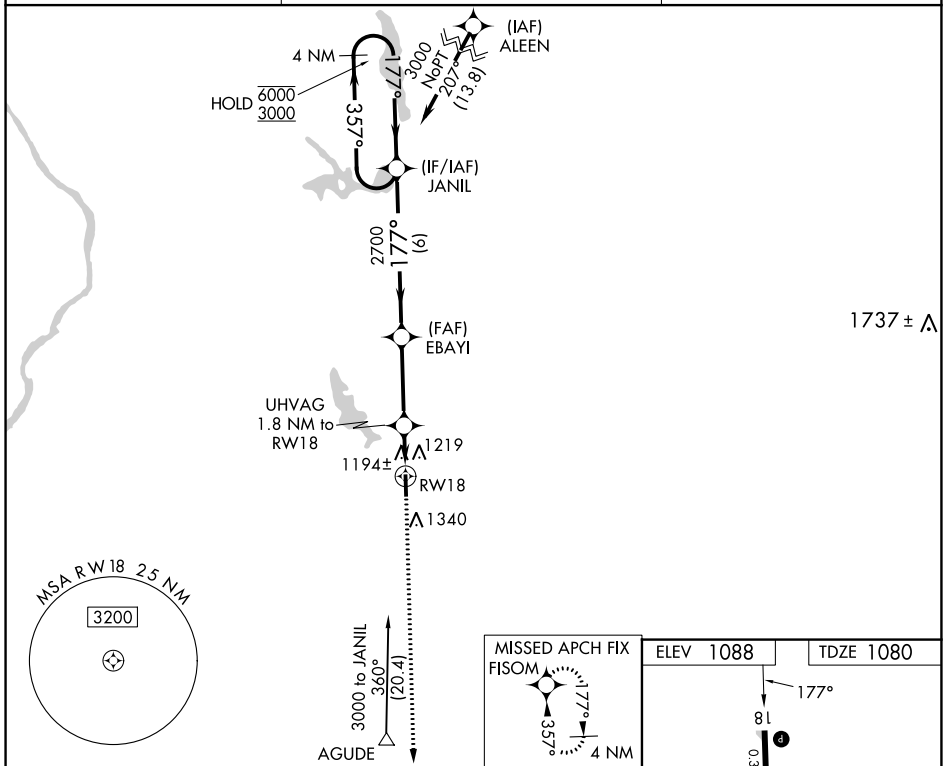
AMERY MUNI (AHH)

RNP APCH.

NA Rwy 18 helicopter visibility reduction below 3/4 SM NA. Use New Richmond altimeter setting; when not received, use Osceola altimeter setting and increase all MDAs 20 feet and Circling Cat C visibility 1/4 SM.

MISSED APPROACH:
Climb to 3000 direct FISOM and hold.

RNH AWOS-3 120.0	MINNEAPOLIS CENTER 125.3 335.6	UNICOM 122.8 (CTAF) 0
----------------------------	--	---------------------------------



ELEV 1088	TDZE 1080
MRL Rwy 18-36 0 REIL Rwy 18 and 36 0	

CATEGORY	A	B	C	D
LP MDA	1500-1	420 (500-1)	1500-1 1/4 420 (500-1 1/4)	NA
LNAV MDA	1600-1	520 (600-1)	1600-1 1/2 520 (600-1 1/2)	NA
C CIRCLING	1740-1	652 (700-1)	1740-1 3/4 652 (700-1 3/4)	NA

EC-3, 13 JUN 2024 to 11 JUL 2024

EC-3, 13 JUN 2024 to 11 JUL 2024