

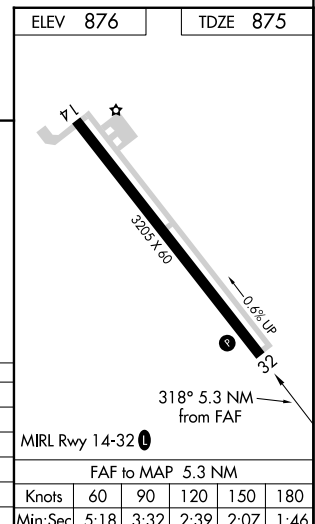
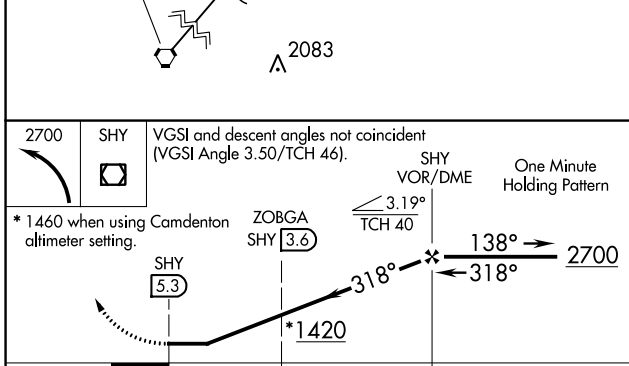
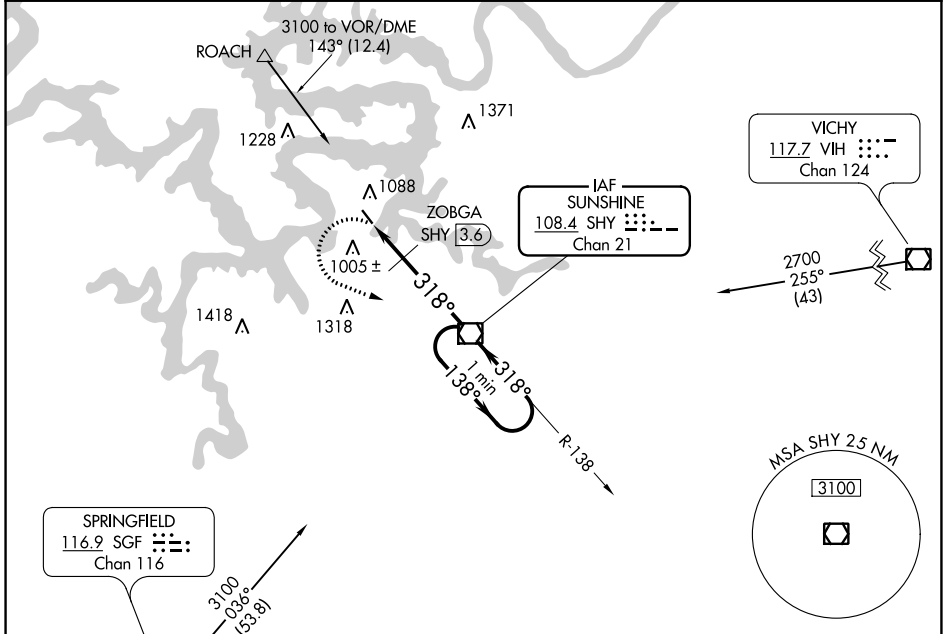
VOR/DME SHY <b>108.4</b> Chan 21	APP CRS <b>318°</b>	Rwy Idg TDZE Apt Elev	<b>3205</b> <b>875</b> <b>876</b>
--	------------------------	-----------------------------	---

**VOR RWY 32**  
GRAND GLAIZE-OSAGE BEACH (K15)

**▼** Helicopter visibility reduction below 1 SM NA. Procedure NA at night.  
**▲ NA** Use Kaiser Lake Ozark altimeter setting; when not received, use Camdenton altimeter setting and increase all MDA 40 feet.

MISSED APPROACH: Climbing left turn to 2700 direct SHY VOR/DME and hold.

MIZZU APP CON <b>124.1 353.925</b>	UNICOM <b>122.8 (CTAF) 0</b>
---------------------------------------	---------------------------------



CATEGORY	A	B	C	D
S-32	1420-1	545 (600-1)		NA
CIRCLING	1420-1	544 (600-1)		NA
ZOBGA FIX MINIMUMS (DME REQUIRED)				
S-32	1280-1	405 (500-1)		NA
CIRCLING	1420-1	544 (600-1)		NA

NC-3, 13 JUN 2024 to 11 JUL 2024

NC-3, 13 JUN 2024 to 11 JUL 2024