

WAAS CH 86832 W32A	APP CRS 320°	Rwy Idg 3205 TDZE 875 Apt Elev 876
--	------------------------	---

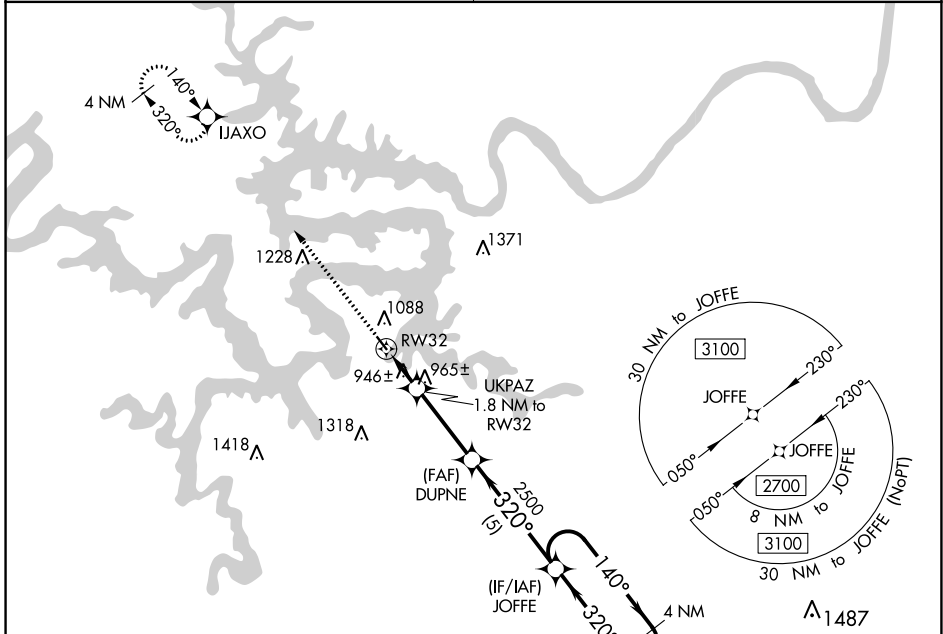
RNAV (GPS) RWY 32

GRAND GLAIZE-OSAGE BEACH (K15)

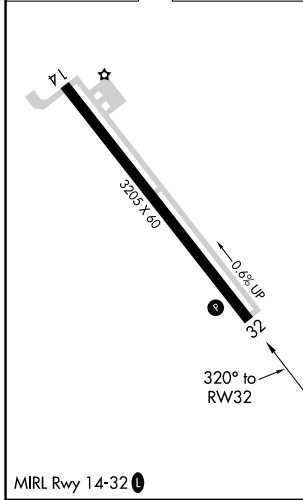
NA DME/DME RNP-0.3 NA. Use Kaiser Lake Ozark altimeter setting; when not received, use Camdenon altimeter setting and increase all MDA 40 feet. Procedure NA at night. Helicopter visibility reduction below 1 SM NA.

MISSED APPROACH: Climb to 2700 direct IJAXO and hold.

MIZZU APP CON **124.1 353.925** UNICOM **122.8 (CTAF) 1**



ELEV 876	TDZE 875
----------	----------



	2700	IJAXO	Visual Segment - Obstacles.	JOFFE	4 NM Holding Pattern
			UKPAZ 1.8 NM to RW32	DUPNE	
			RW32	2500	140° → 2700
			1.8 NM	3.2 NM	← 320°
CATEGORY	A	B	C	D	
LP MDA	1220-1	345 (400-1)			NA
LNAV MDA	1240-1	365 (400-1)			NA
CIRCLING	1420-1	544 (600-1)			NA

NC-3, 13 JUN 2024 to 11 JUL 2024

NC-3, 13 JUN 2024 to 11 JUL 2024