

| | | |
|--|------------------------|---|
| WAAS CH 48932 W14A | APP CRS 140° | Rwy Idg 3205 TDZE 876 Apt Elev 876 |
|--|------------------------|---|

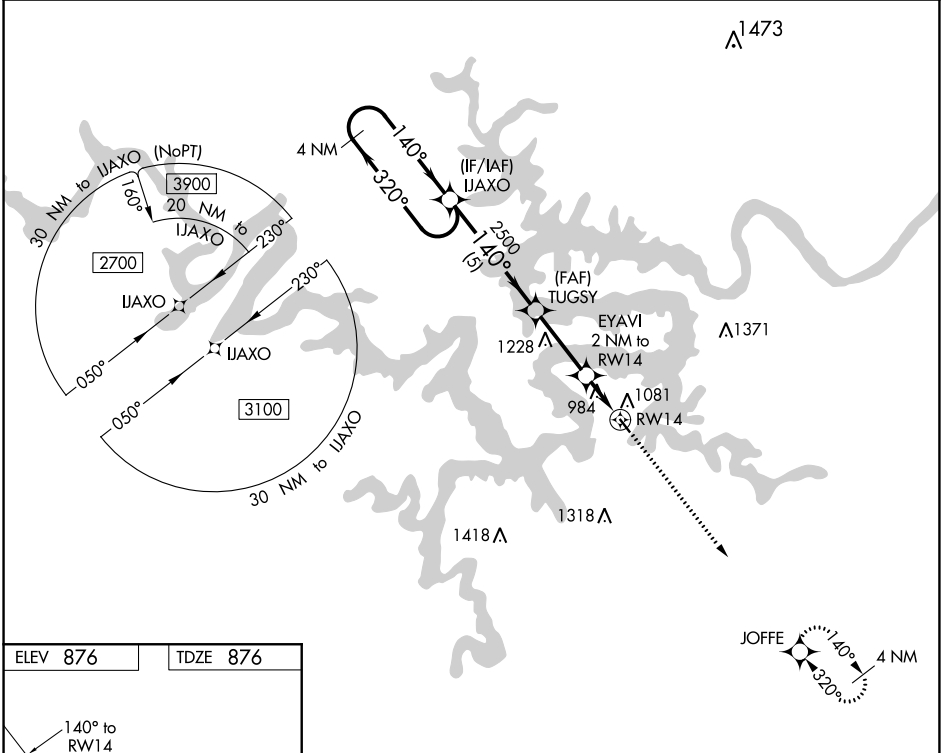
RNAV (GPS) RWY 14

GRAND GLAIZE-OSAGE BEACH (K15)

⚠ NA Use Kaiser Lake Ozark altimeter setting; when not received, use Camden ton altimeter setting and increase all MDA 40 feet. DME/DME RNP- 0.3 NA. Procedure NA at night. Helicopter visibility reduction below 1 SM NA.

MISSED APPROACH: Climb to 2700 direct JOFFE and hold.

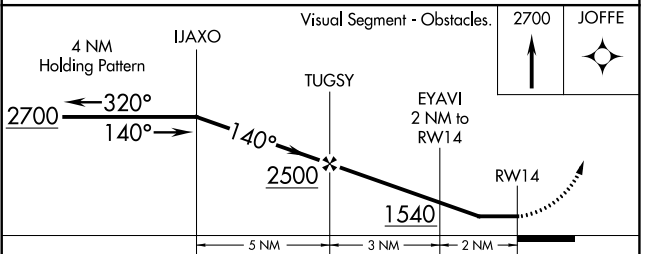
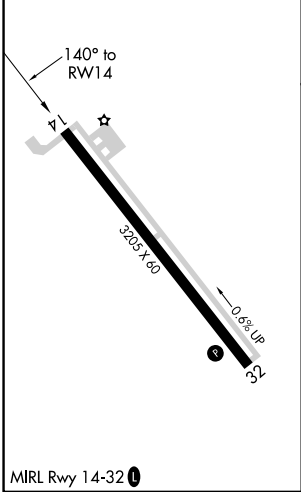
MIZZU APP CON **124.1 353.925** UNICOM **122.8 (CTAF) 0**



NC-3, 13 JUN 2024 to 11 JUL 2024

NC-3, 13 JUN 2024 to 11 JUL 2024

ELEV 876 TDZE 876



| CATEGORY | A | B | C | D |
|----------|--------|-------------|---|----|
| LP MDA | 1300-1 | 424 (500-1) | | NA |
| LNAV MDA | 1360-1 | 484 (500-1) | | NA |
| CIRCLING | 1420-1 | 544 (600-1) | | NA |