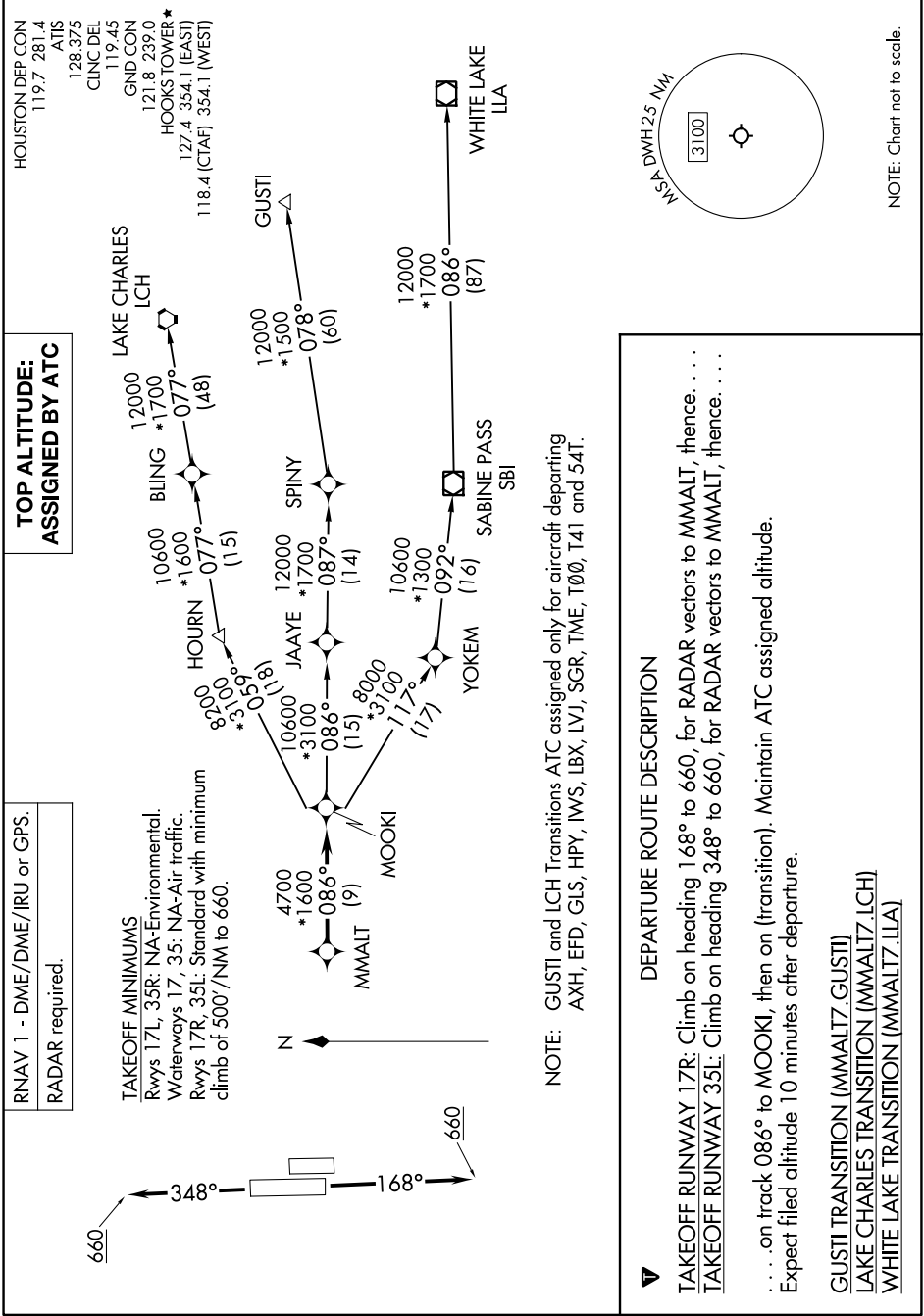


MMALT SEVEN DEPARTURE (RNAV)

AL-5457 (FAA)

HOUSTON, TEXAS

SC-5, 13 JUN 2024 to 11 JUL 2024



**TOP ALTITUDE:
ASSIGNED BY ATC**

RNAV 1 - DME/DME/RU or GPS.
RADAR required.

TAKEOFF MINIMUMS
Rwys 17L, 35R: NA-Environmental.
Waterways 17, 35: NA-Air traffic.
Rwys 17R, 35L: Standard with minimum
climb of 500'/NM to 660.

NOTE: GUSTI and LCH Transitions ATC assigned only for aircraft departing
AXH, EFD, GLS, HPY, IWS, LBX, LVJ, SGR, TME, T00, T41 and 54T.

DEPARTURE ROUTE DESCRIPTION

TAKEOFF RUNWAY 17R: Climb on heading 168° to 660, for RADAR vectors to MMALT, thence. . . .
TAKEOFF RUNWAY 35L: Climb on heading 348° to 660, for RADAR vectors to MMALT, thence. . . .
. . . . on track 086° to MOOKI, then on (transition). Maintain ATC assigned altitude.
Expect filed altitude 10 minutes after departure.

GUSTI TRANSITION (MMALT7.GUSTI)
LAKE CHARLES TRANSITION (MMALT7.LCH)
WHITE LAKE TRANSITION (MMALT7.LLA)

NOTE: Chart not to scale.

SC-5, 13 JUN 2024 to 11 JUL 2024