

(BLTWY7.BLTWY) 21280

BLTWY SEVEN DEPARTURE (RNAV)

AL-5457 (FAA)

DAVID WAYNE HOOKS MEML (DWH)

HOUSTON, TEXAS

ATIS
 128.375
 CLNC DEL
 119.45
 GND CON
 121.8 239.0
 HOOKS TOWER ★
 127.4 354.1 (EAST)
 118.4 (CTAF) 354.1 (WEST)
 HOUSTON DEP CON
 119.7 281.4

**TOP ALTITUDE:
ASSIGNED BY ATC**

NOTE: RADAR required.
 NOTE: DME/DME/IRU or GPS required.
 NOTE: RNAV 1.

TAKEOFF MINIMUMS

Rwy 17L, 35R: NA - Environmental.
 Waterways 17, 35: NA - Air Traffic.
 Rwy 17R, 35L: Standard with minimum
 climb of 500' per NM to 660.

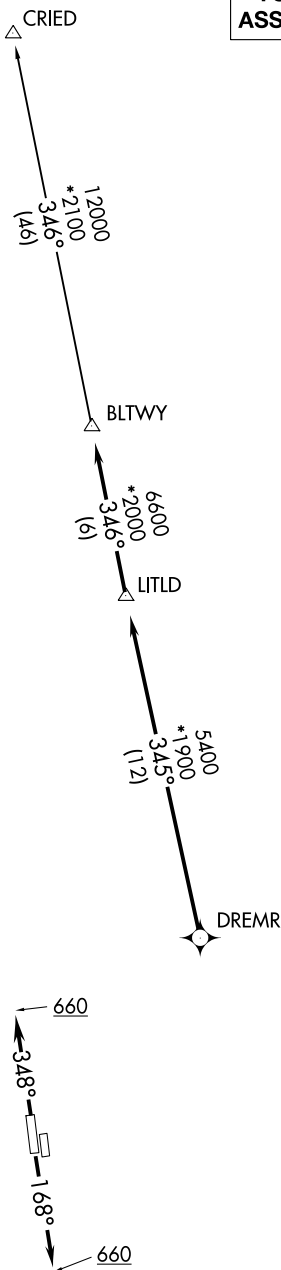
▼ DEPARTURE ROUTE DESCRIPTION

TAKEOFF RUNWAY 17R: Climb on heading 168° to 660 for RADAR vectors to DREMR, thence. . .

TAKEOFF RUNWAY 35L: Climb on heading 348° to 660 for RADAR vectors to DREMR, thence. . .

. . . on track 345° to LITLD, then on track 346° to BLTWY, then on (transition).
 Maintain ATC assigned altitude. Expect filed altitude 10 minutes after departure.

CRIED TRANSITION (BLTWY7.CRIED)



NOTE: Chart not to scale.

SC-5, 13 JUN 2024 to 11 JUL 2024

SC-5, 13 JUN 2024 to 11 JUL 2024

BLTWY SEVEN DEPARTURE (RNAV)

(BLTWY7.BLTWY) 07OCT21

HOUSTON, TEXAS

DAVID WAYNE HOOKS MEML (DWH)