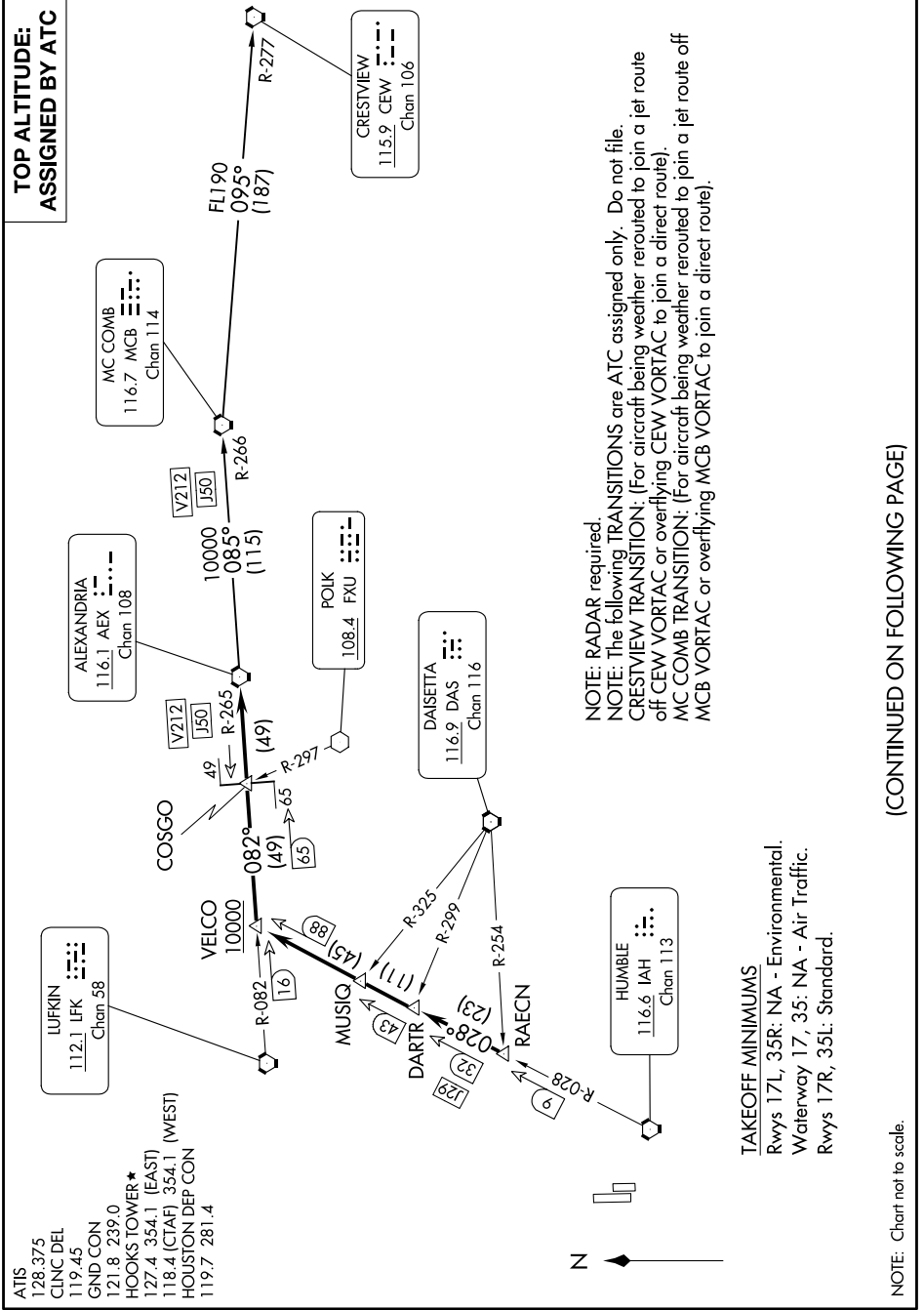


ALEXANDRIA THREE DEPARTURE

SC-5, 13 JUN 2024 to 11 JUL 2024



ATIS 128.375
 CINC DEL 119.45
 GND CON 121.8 239.0
 HOOKS TOWER ★ 127.4 354.1 (EAST)
 118.4 (CTAF) 354.1 (WEST)
 HOUSTON DEP CON 119.7 281.4

NOTE: RADAR required.
NOTE: The following TRANSITIONS are ATC assigned only. Do not file.
CRESTVIEW TRANSITION: (For aircraft being weather routed to join a jet route of CEW VORTAC or overflying CEW VORTAC to join a direct route).
MC COMB TRANSITION: (For aircraft being weather routed to join a jet route off MCB VORTAC or overflying MCB VORTAC to join a direct route).

TAKEOFF MINIMUMS
 Rwy 17L, 35R: NA - Environmental.
 Waterway 17, 35: NA - Air Traffic.
 Rwy 17R, 35L: Standard.

(CONTINUED ON FOLLOWING PAGE)

NOTE: Chart not to scale.

SC-5, 13 JUN 2024 to 11 JUL 2024

ALEXANDRIA THREE DEPARTURE