

FAIRBANKS, ALASKA

RNAV (GPS) RWY 14

APCH CRS	Rwy Idg	14,530
140°	TDZE	537
	Arprt Elev	548

AL-1729 (USAF)

EIELSON AFB (PAEI)

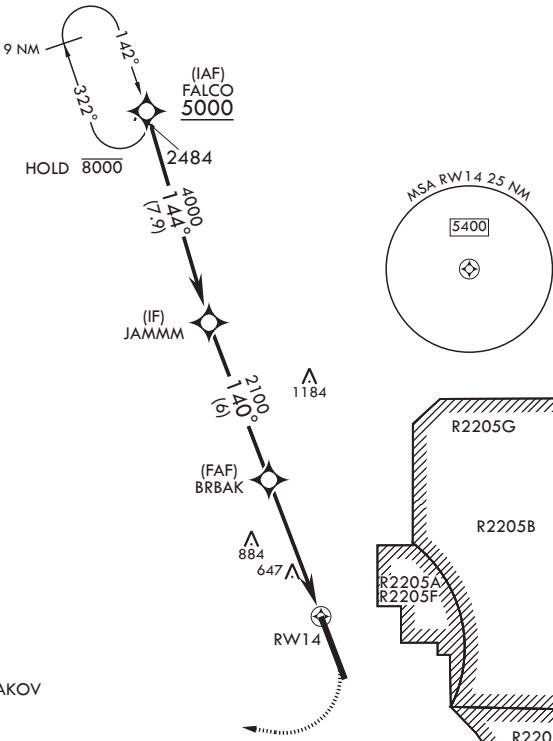
<p>▼ * When ALS inop, increase RVR to 55 and vis to 1 mile. ** Circling not authorized E Rwy 14-32.</p>	<p>ALSF-1</p>	<p>MISSED APPROACH: Climb to 1100 then climbing right turn to 4000 direct WAKOV and hold, continue climb-in-hold to 4000.</p>

<p>ATIS*</p> <p>119.9 273.5</p>	<p>FAIRBANKS APP CON</p> <p>125.35 363.2 180°-359° 127.1 251.1 360°-179°</p>	<p>TOWER*</p> <p>127.2 352.05</p>	<p>GND CON</p> <p>121.8 275.8</p>	<p>CLNC DEL</p> <p>343.7</p>
---------------------------------	--	-----------------------------------	-----------------------------------	------------------------------

DME/DME RNP - 0.3 NA

CAUTION: CAT DE circling airspace not completely contained within controlled airspace. Uncontrolled airspace below 700' AGL outside EIL Class D.

CAUTION: Holding not authorized at WAKOV unless approved by ATC.



EMERG SAFE ALT 100 NM 16,000

<p>FALCO</p> <p>5000</p>	<p>JAMMM</p> <p>4000</p>	<p>BRBAK</p> <p>2100</p>	<p>1.4 NM to RW14</p> <p>2.73' ≥ TCH 54</p> <p>5.2 NM</p>	<p>RW14</p>	<p>1100</p> <p>4000</p> <p>WAKOV</p> <p>ELEV 548</p> <p>TDZE 537</p>	<p>140° to RW14</p> <p>Rwy lgt on S 3200' of rwy 150' wide.</p> <p>Rwy lgt on N 11,314' of rwy 300' wide.</p> <p>BCN 660</p> <p>TWR 668</p>
<p>CATEGORY</p>	A	B	C	D	E	
<p>LNAV MDA*</p>	1000/24	463 (500-½)	1000/50	463	(500-1)	
<p>☐ CIRCLING**</p>	1000-1 452 (500-1)	1040-1 492 (500-1)	1040-1½ 492 (500-1½)	1280-2¼ 732 (800-2¼)	1280-2½ 732 (800-2½)	

FAIRBANKS, ALASKA

64°40'N - 147°06'W

EIELSON AFB (PAEI)

Amdt 6 17JUN21
TERPS

RNAV (GPS) RWY 14

AK, 16 MAY 2024 to 11 JUL 2024

AK, 16 MAY 2024 to 11 JUL 2024