

# ILS or LOC/DME RWY 14

LOC I-EIL <b>110.5</b>	APCH CRS <b>140°</b>	Rwy lgt <b>14,530</b> TDZE <b>537</b> Arpt Elev <b>548</b>
---------------------------	-------------------------	--

[USAF]

EIELSON AFB (PAEI)

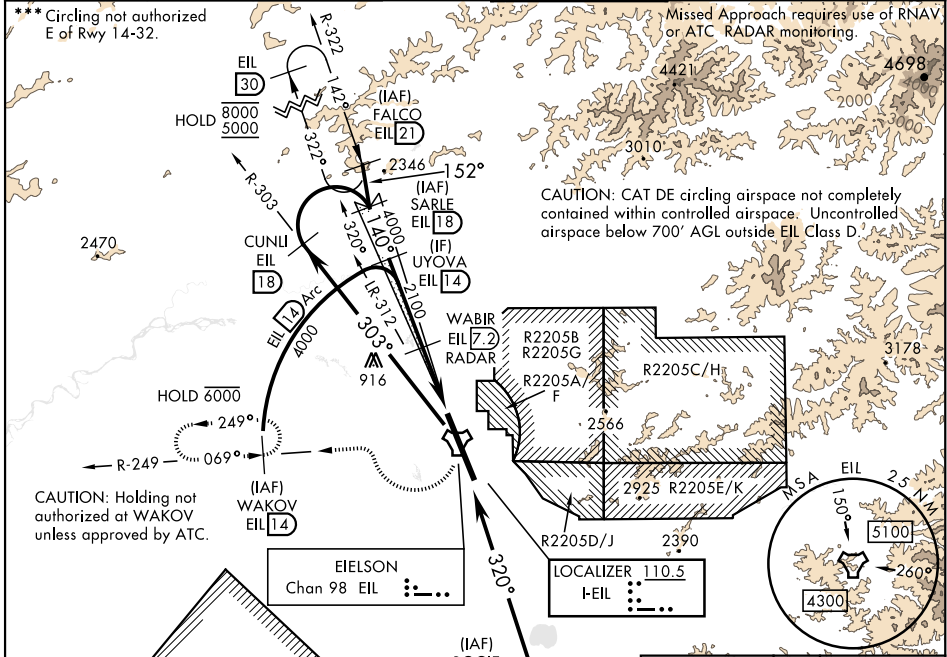
RADAR or DME required.

▼ \* When ALS inop, incr RVR to 40, and vis to ¾ mile.  
 \*\* When ALS inop, incr CAT AB RVR to 55, and vis to 1 mile; CAT CDE vis to 1½ miles.



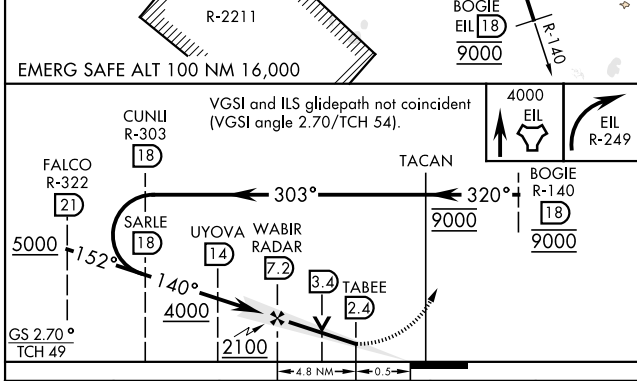
MISSED APPROACH: Climb to 4000 direct EIL TACAN, continue climbing right turn to intercept EIL R-249 to WAKOV and hold. Continue climb-in-hold to 4000.

ATIS ★ <b>119.9 273.5</b>	ASOS <b>118.525</b>	FAIRBANKS APP CON <b>127.1 251.1 360°-179°</b> <b>125.35 363.2 180°-359°</b>	TOWER ★ <b>127.2 352.05</b>	GND CON <b>121.8 275.8</b>	CLNC DEL <b>343.7</b>
------------------------------	------------------------	--	--------------------------------	-------------------------------	--------------------------

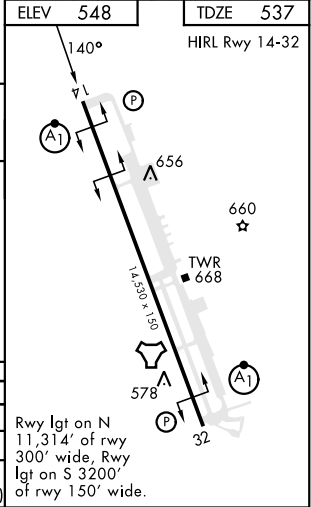


AK, 16 MAY 2024 to 11 JUL 2024

AK, 16 MAY 2024 to 11 JUL 2024



CATEGORY	A	B	C	D	E
S-ILS 14 *	737/24 200 (200-½)				
S-LOC 14 **	1000/24 463 (500-½) 1000/50 463 (500-1)				
*** CIRCLING	1000-1 452 (500-1)	1040-1 492 (500-1)	1040-1½ 492 (500-1½)	1280-2¼ 732 (800-2¼)	1280-2½ 732 (800-2½)



# ILS or LOC/DME RWY 14