

WAAS CH 77915 W08A	APP CRS 077°	Rwy Idg TDZE Apt Elev	6118 399 403
----------------------------------------	------------------------	-----------------------------	-----------------------------------------

RNAV (GPS) RWY 8

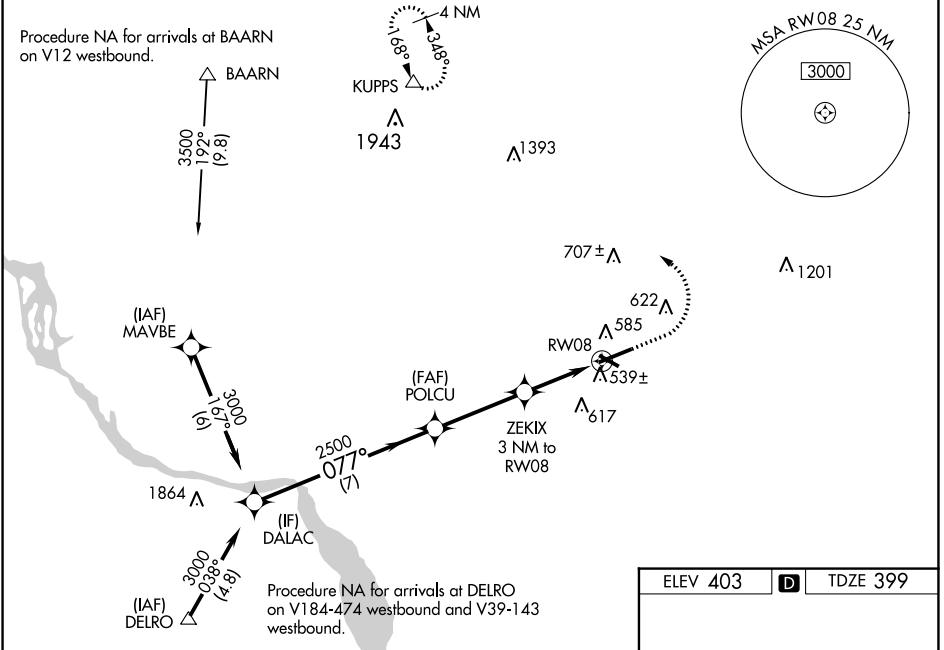
LANCASTER (LNS)

For uncompensated Baro-VNAV systems, LNAV/VNAV NA below -15°C (5°F) or above 54°C (130°F). DME/DME RNP-0.3 NA. When local altimeter setting not received, use Harrisburg Intl altimeter setting and increase all DA 64 feet and all MDA 80 feet, increase LNAV/VNAV all Cats visibility ¼ mile, LNAV and Circling Cats C and D visibility ¼ mile. Baro-VNAV and VDP NA when using Harrisburg Intl altimeter setting. Night landing: Rwy 13, 31 NA. For inoperative MALS/R increase LNAV/VNAV all Cats visibility to 1¼ mile, and LNAV Cats C/D visibility to 1½ mile. For inoperative MALS/R when using Harrisburg Intl altimeter setting, increase LPV all Cats visibility to ¾ mile, LNAV/VNAV all Cats visibility to 1½ mile and LNAV Cats C/D visibility to 1¾ mile.



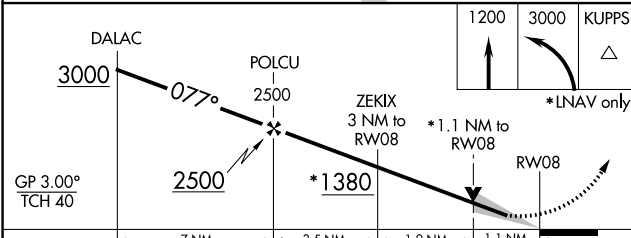
MISSED APPROACH:
Climb to 1200 then climbing left turn to 3000 direct KUPPS and hold.

ATIS 125.675	HARRISBURG APP CON 126.45 281.525	LANCASTER TOWER ★ 120.9 (CTAF) 251.1	GND CON 121.8	UNICOM 122.95
------------------------	----------------------------------------------------	--------------------------------------------------------------	-------------------------	-------------------------



NE-4, 13 JUN 2024 to 11 JUL 2024

NE-4, 13 JUN 2024 to 11 JUL 2024



CATEGORY	A	B	C	D
LPV DA	599-½		200 (200-½)	
LNAV/VNAV DA	784-¾		385 (400-¾)	
LNAV MDA	800-½	401 (400-½)	800-¾	401 (400-¾)
CIRCLING	940-1	537 (600-1)	960-1½	1060-2
			557 (600-1½)	657 (700-2)

ELEV 403	D	TDZE 399
----------	----------	----------

REIL Rwy 31 **1**
HIRL Rwy 8-26 **1**
MIRL Rwy 13-31 **1**