

WAAS CH <b>48823</b> <b>W31A</b>	APP CRS <b>308°</b>	Rwy Idg <b>4102</b> TDZE <b>403</b> Apt Elev <b>403</b>
--	------------------------	---

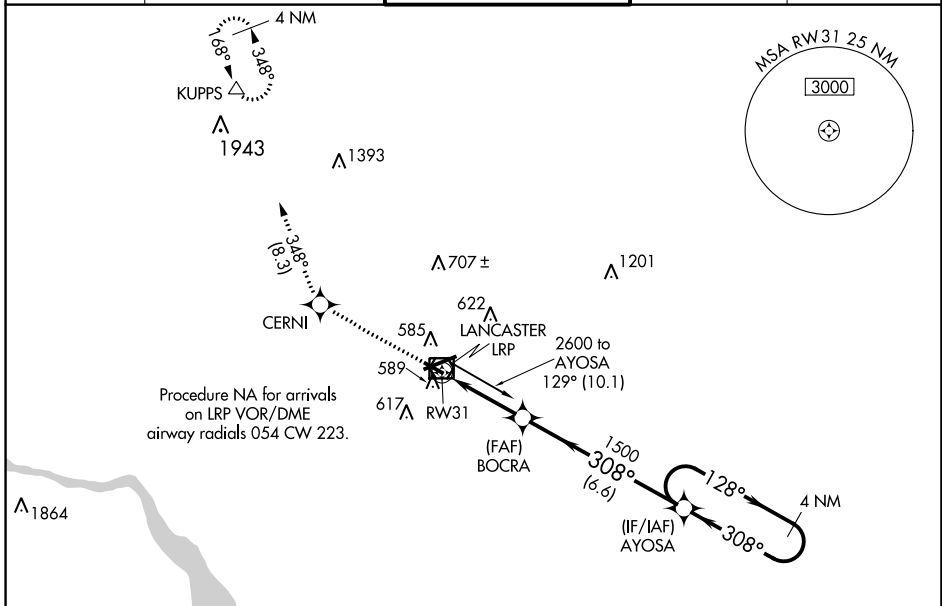
# RNAV (GPS) RWY 31

LANCASTER (LNS)

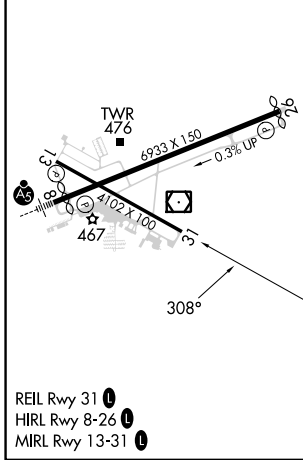
**⚠** Night landing: Rwy 13, 31 NA. For uncompensated Baro-VNAV systems, LNAV/VNAV NA below -15°C (5°F) or above 42°C (107°F). DME/DME RNP-0.3 NA. Helicopter visibility reduction below 1 SM NA. When local altimeter setting not received, use Harrisburg Intl altimeter setting and increase all DA 64 feet and all MDA 80 feet, increase LNAV/VNAV visibility all Cats and LNAV and Circling Cat C/D visibility ¼. Baro-VNAV NA when using Harrisburg Intl altimeter setting.

**MISSED APPROACH:**  
Climb to 3000 direct CERNI and on track 348° to KUPPS and hold.

ATIS <b>125.675</b>	HARRISBURG APP CON <b>126.45 281.525</b>	LANCASTER TOWER ★ <b>120.9 (CTAF) 251.1</b>	GND CON <b>121.8</b>	UNICOM <b>122.95</b>
------------------------	---	--	-------------------------	-------------------------



ELEV <b>403</b>	<b>D</b>	TDZE <b>403</b>
-----------------	----------	-----------------



3000	CERNI	tr 348°	KUPPS	AYOSA	4 NM Holding Pattern
	RW31	BOCRA 1500		128° → 2600	← 308°
		1500			GP 3.00° TCH 37
		3.3 NM	6.6 NM		
CATEGORY	A	B	C	D	
LPV DA		653-1	250 (300-1)		
LNAV/VNAV DA		774-1¼	371 (400-1¼)		
LNAV MDA	840-1	437 (500-1)	840-1⅓	437 (500-1⅓)	
CIRCLING	940-1	537 (600-1)	960-1½	1060-2	657 (700-2)

NE-4, 13 JUN 2024 to 11 JUL 2024

NE-4, 13 JUN 2024 to 11 JUL 2024