

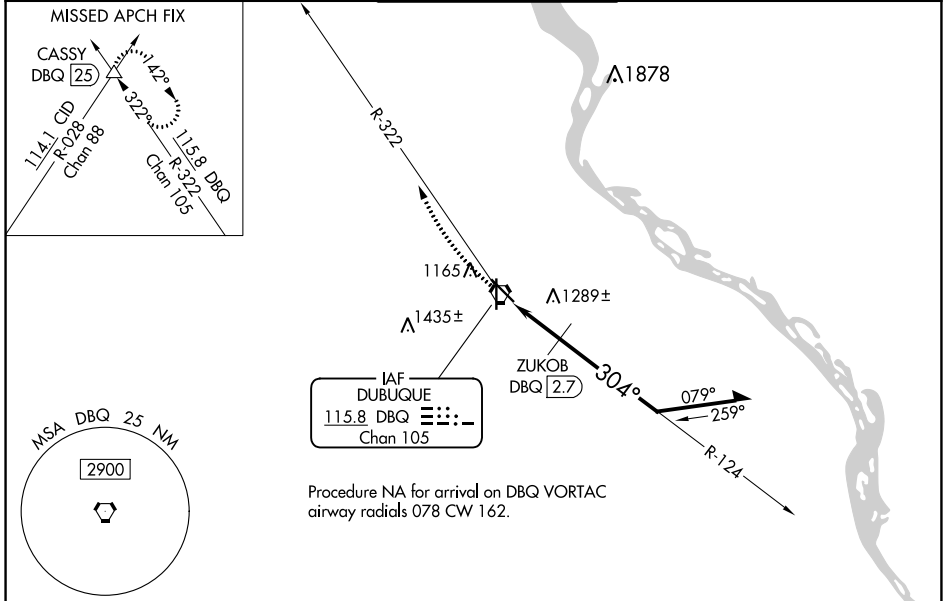
VORTAC DBQ <b>115.8</b> Chan <b>105</b>	APP CRS <b>304°</b>	Rwy Idg <b>6502</b> TDZE <b>1062</b> Apt Elev <b>1077</b>
---	------------------------	---

# VOR RWY 31

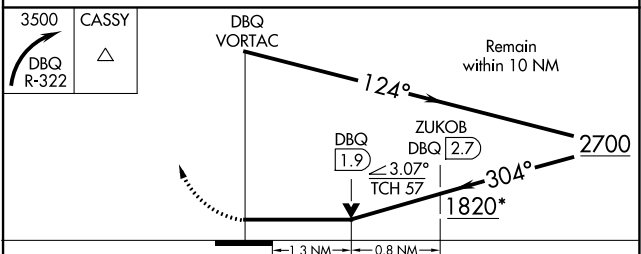
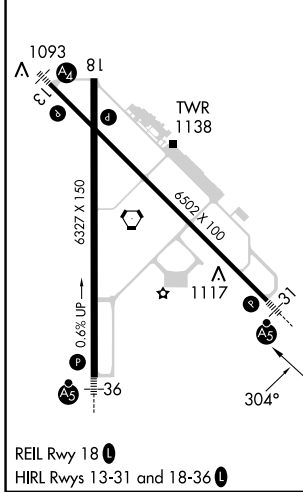
DUBUQUE RGNL (DBQ)

	VOR minimums: For inop ALS, increase S-31 Cats C and D visibility to 2 SM. ZUKOB fix minimums: For inop ALS, increase S-31 Cats C and D visibility to 1 1/2 SM.	MALSR 	MISSED APPROACH: Climbing right turn to 3500 on DBQ VORTAC R-322 to CASSY INT/ 25 DME and hold.

ATIS <b>127.25</b>	CHICAGO CENTER <b>133.95 281.4</b>	DUBUQUE TOWER * <b>119.5 (CTAF) 0 254.4</b>	GND CON <b>121.8</b>	UNICOM <b>122.95</b>
-----------------------	---------------------------------------	--	-------------------------	-------------------------



ELEV 1077	<b>D</b>	TDZE 1062
-----------	----------	-----------



CATEGORY	A	B	C	D
S-31	1820-1/2 758 (800-1/2)	1820-3/4 758 (800-3/4)	1820-1 3/4	758 (800-1 3/4)
<b>C</b> CIRCLING	1820-1 743 (800-1)	1820-1 1/4 743 (800-1 1/4)	1820-2 1/4 743 (800-2 1/4)	1820-2 1/2 743 (800-2 1/2)
ZUKOB FIX MINIMUMS				
S-31	1540-1/2	478 (500-1/2)	1540-1	478 (500-1)
<b>C</b> CIRCLING	1580-1 503 (600-1)	1600-1 523 (600-1)	1600-1 1/2 523 (600-1 1/2)	1800-2 723 (800-2)

NC-3, 13 JUN 2024 to 11 JUL 2024

NC-3, 13 JUN 2024 to 11 JUL 2024