

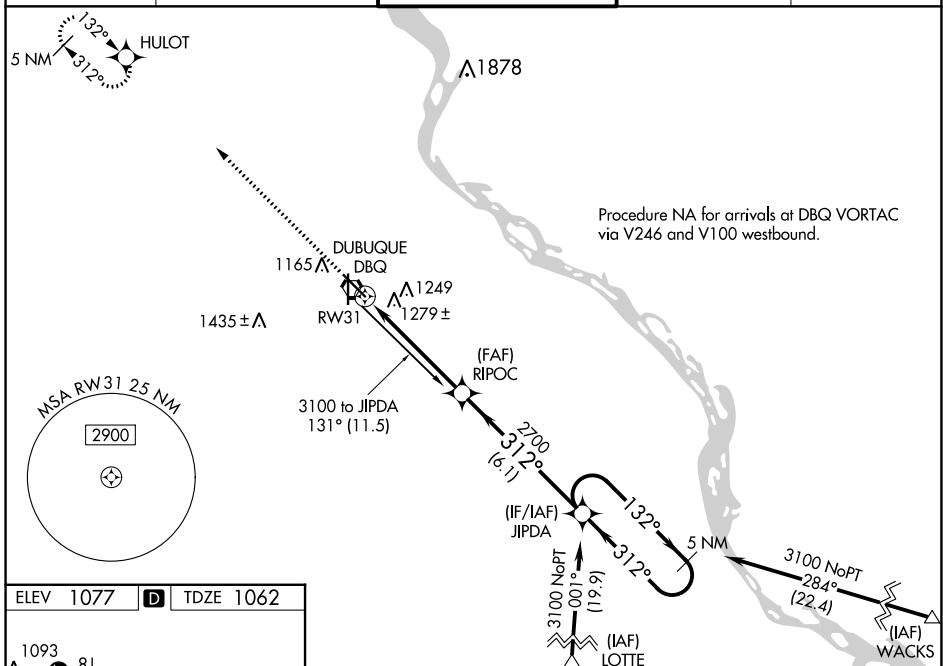
WAAS CH 69400 W31A	APP CRS 312°	Rwy Idg 6502 TDZE 1062 Apt Elev 1077
--	------------------------	---

RNAV (GPS) RWY 31

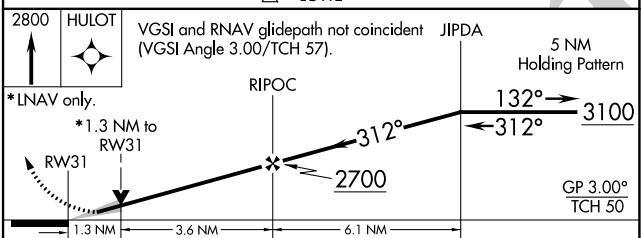
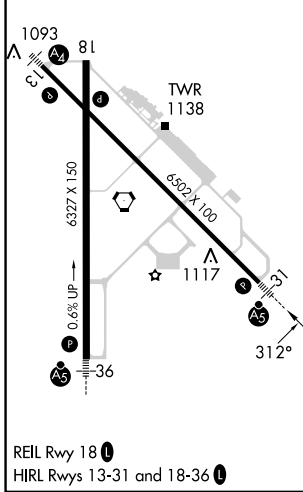
DUBUQUE RGNL (DBQ)

RNP APCH - GPS.		MALSRL	MISSED APPROACH: Climb to 2800 direct HULOT and hold.
<p>▼ ▲</p> <p>For inop ALS, increase LPV all Cats visibility to 1½ SM and LNAV Cats A and B visibility to 1 SM. Baro-VNAV NA when using Monticello altimeter setting. For uncompensated Baro-VNAV systems, LNAV/VNAV NA below -17°C or above 46°C. VDP NA when using Monticello altimeter setting. If local altimeter setting not received, use Monticello altimeter setting and increase all DAs/MDAs 100 feet.</p>			

ATIS 127.25	CHICAGO CENTER 133.95 281.4	DUBUQUE TOWER* 119.5 (CTAF) 0 254.4	GND CON 121.8	UNICOM 122.95
-----------------------	---------------------------------------	---	-------------------------	-------------------------



ELEV 1077	D	TDZE 1062
-----------	----------	-----------



CATEGORY	A	B	C	D
LPV DA	1481-1 419 (500-1)			
LNAV/ VNAV DA	1603-1½ 541 (600-1½)			
LNAV MDA	1540-¾ 478 (500-¾)		1540-1 478 (500-1)	
C CIRCLING	1620-2 543 (600-2)		1800-2¼ 723 (800-2¼)	

NC-3, 13 JUN 2024 to 11 JUL 2024

NC-3, 13 JUN 2024 to 11 JUL 2024