

WAAS CH 86620	APP CRS W36A	Rwy Idg TDZE Apt Elev	5998 202 206
-------------------------	------------------------	-----------------------------	---

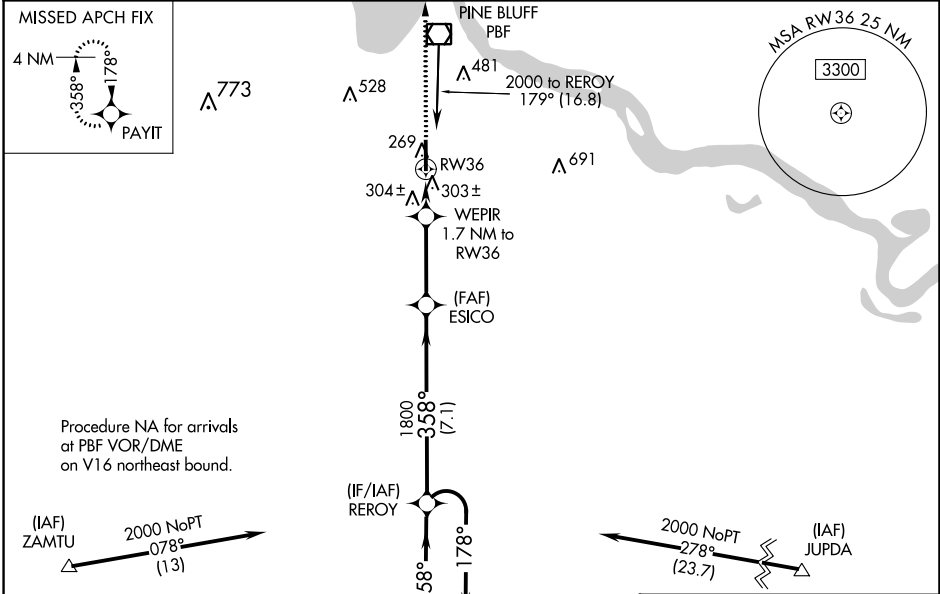
RNAV (GPS) RWY 36

PINEBLUFF RGNL/GRIDER FLD (PBF)

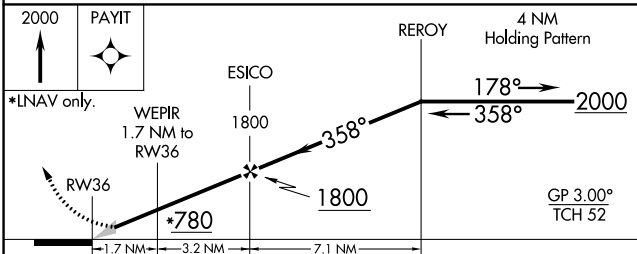
⚠ Baro-VNAV NA when using Stuttgart altimeter setting. For uncompensated Baro-VNAV systems, LNAV/VNAV NA below -15°C or above 42°C. DME/DME RNP-0.3 NA. When local altimeter setting not received, use Stuttgart altimeter setting; increase LPV DA to 527 feet; increase LNAV/VNAV DA to 562 feet and visibility all Cats ½ SM; increase all MDA 80 feet and LNAV and Circling visibility Cats C/D ¼ SM.

MISSED APPROACH:
Climb to 2000 direct PAYIT and hold.

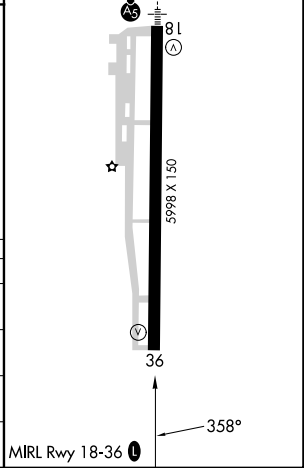
ASOS 120.775	LITTLE ROCK APP CON 119.85 353.6	CLNC DEL 119.85	UNICOM 123.0 (CTAF) 0
------------------------	--	---------------------------	---------------------------------



Procedure NA for arrivals at PBF VOR/DME on V16 northeast bound.



ELEV	206	TDZE	202
------	-----	------	-----



CATEGORY	A	B	C	D
LPV DA	452-1 250 (300-1)			
LNAV/VNAV DA	487-1 285 (300-1)			
LNAV MDA	600-1 398 (400-1)	600-1 ⅓ 398 (400-1 ⅓)		
CIRCLING	660-1 454 (500-1)	680-1 474 (500-1)	840-1 ⅜ 634 (700-1 ⅜)	880-2 ⅜ 674 (700-2 ⅜)

SC-1, 13 JUN 2024 to 11 JUL 2024

SC-1, 13 JUN 2024 to 11 JUL 2024