

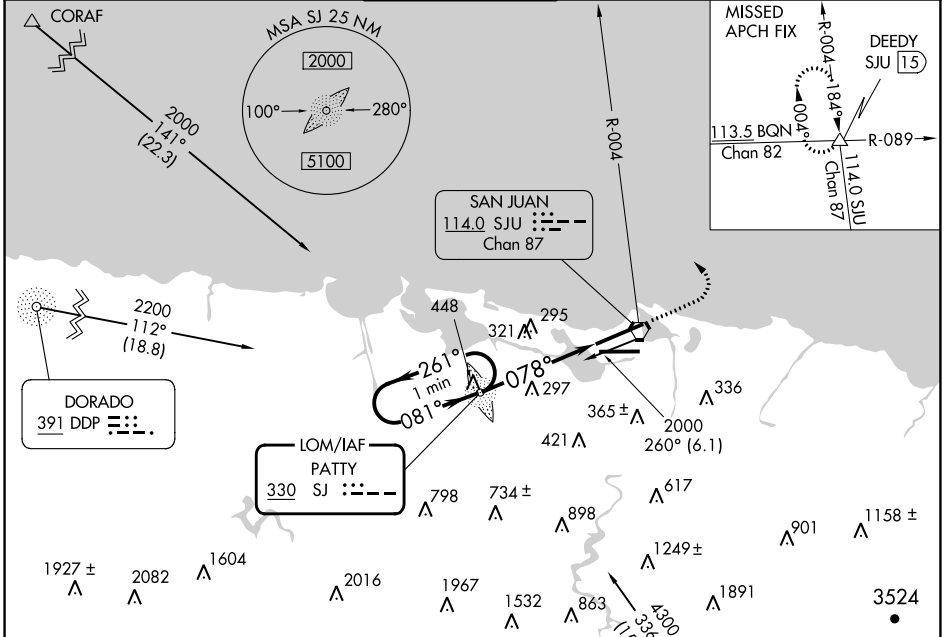
LOM SJ	APP CRS	Rwy ldg	<b>9384</b>
<b>330</b>	<b>078°</b>	TDZE	<b>9</b>
		Apt Elev	<b>10</b>

# NDB RWY 8

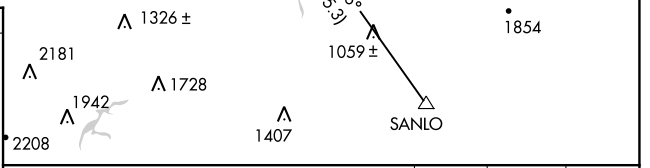
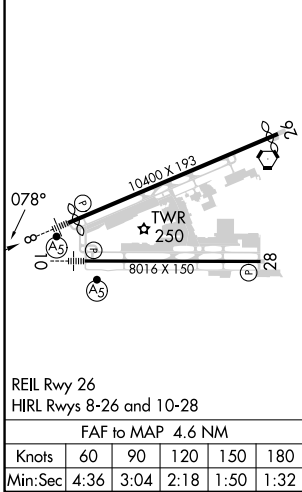
LUIS MUNOZ MARIN INTL (SJU)(TJSJ)

	<b>MALS R</b> 		<b>MISSED APPROACH:</b> Climb to 2000, then climbing left turn to 3000 via SJU VORTAC R-004 to DEEDY Int/SJU 15 DME and hold.		

D-ATIS	SAN JUAN APP CON	SAN JUAN TOWER	GND CON	CLNC DEL	CPDLC
<b>125.8</b>	<b>119.4 269.2</b> (WEST & SW) <b>120.9 290.2</b> (NORTH & EAST)	<b>132.05 257.8</b>	<b>121.9 348.6</b>	<b>126.4 284.6</b>	



ELEV 10	<b>D</b>	TDZE 9
---------	----------	--------



One Minute Holding Pattern	PATTY LOM	2000	3000	DEEDY
2000	← 261°	→ 081°	↑	SJU R-004
VGSI and descent angles not coincident (VGSI Angle 3.00/TCH 70).		1700	078°	
		3.36°	TCH 46	
		4.6 NM		

REIL Rwy 26	HIRL Rwys 8-26 and 10-28				
FAF to MAP 4.6 NM					
Knots	60	90	120	150	180
Min:Sec	4:36	3:04	2:18	1:50	1:32
CATEGORY	A		B		D
S-8	600-¾ 591 (600-¾)		600-1 591 (600-1)		600-1½ 591 (600-1½)
CIRCLING	600-1 590 (600-1)		740-2 730 (800-2)		920-3 910 (1000-3)

SE-3, 13 JUN 2024 to 11 JUL 2024

SE-3, 13 JUN 2024 to 11 JUL 2024