

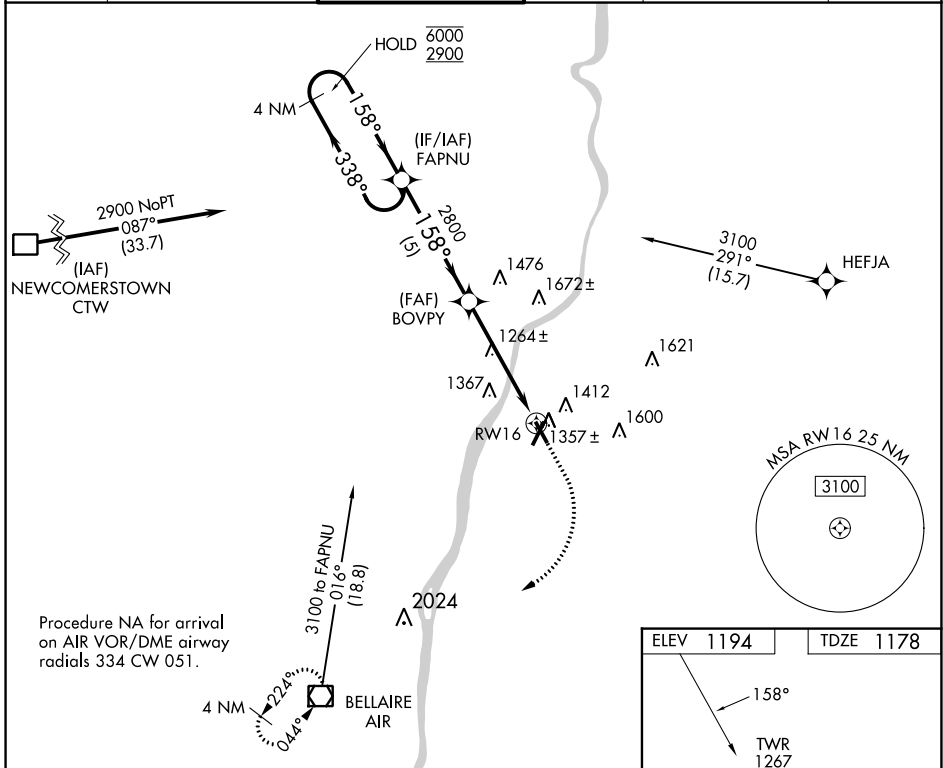
WAAS CH <b>99640</b> <b>W16A</b>	APP CRS <b>158°</b>	Rwy Idg TDZE Apt Elev	<b>4499</b> <b>1178</b> <b>1194</b>
--	------------------------	-----------------------------	---

# RNAV (GPS) RWY 16

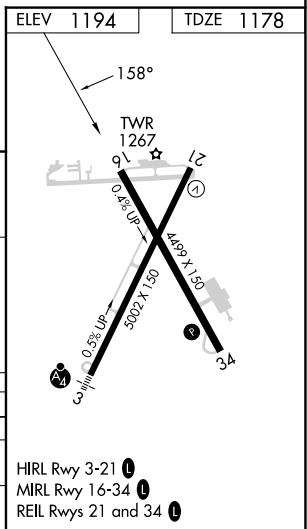
WHEELING OHIO COUNTY (HLG)

RNP APCH.		MISSED APPROACH: Climb to 1700 then climbing right turn to 3100 direct AIR VOR/DME and hold.			
-----------	--	--	--	--	--

ASOS <b>127.375</b>	PITTSBURGH APP CON <b>125.275 285.575</b>	WHEELING TOWER ★ <b>118.1 (CTAF) 0 257.8</b>	GND CON <b>121.75</b>	CLNC DEL <b>125.275</b> (when twr closed)	UNICOM <b>122.95</b>
------------------------	--	---	--------------------------	---	-------------------------



4 NM Holding Pattern FAPNU		1700	3100	AIR
6000 ← 338°		BOVPTY		
2900 → 158°		1 NM to RWY 16		
158°		RWY 16		
2800		3.00° TCH 40		
5 NM		4 NM		
1 NM		1 NM		
CATEGORY	A	B	C	D
LP MDA	1520-1		342 (400-1)	
LNAV MDA	1620-1	442 (500-1)	1620-1 <sup>3</sup> / <sub>8</sub>	442 (500-1 <sup>3</sup> / <sub>8</sub> )
CIRCLING	1720-1 526 (600-1)	1740-1 546 (600-1)	1920-2 726 (800-2)	1920-2 <sup>1</sup> / <sub>4</sub> 726 (800-2 <sup>1</sup> / <sub>4</sub> )



NE-4, 13 JUN 2024 to 11 JUL 2024

NE-4, 13 JUN 2024 to 11 JUL 2024