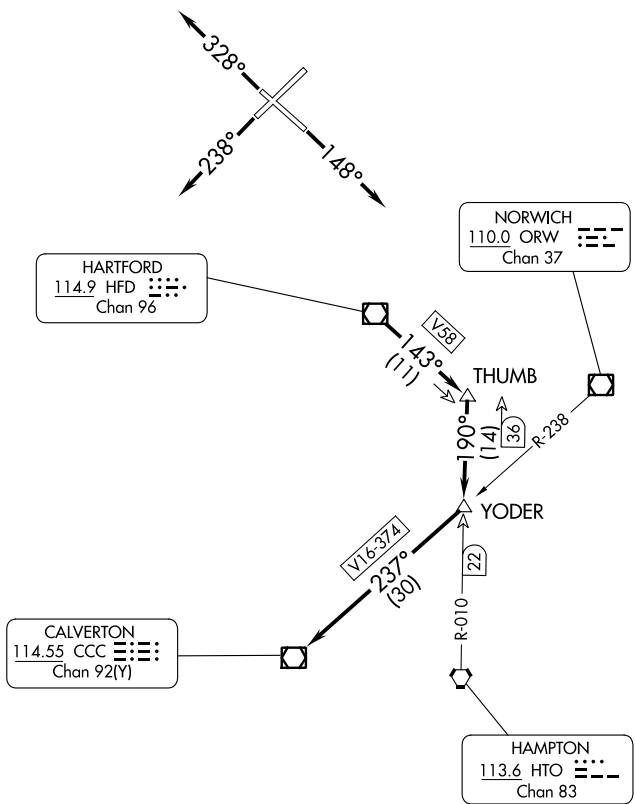


D-ATIS 118.15
 CLNC DEL
 121.75 322.3
 GND CON
 121.9 348.6
 CPDLC
 BRADLEY TOWER
 120.3 351.8
 BRADLEY DEP CON
 123.95 290.55 (061°-240°)
 125.35 281.5 (241°-060°)

**TOP ALTITUDE:
4000**



NE-1, 13 JUN 2024 to 11 JUL 2024

NE-1, 13 JUN 2024 to 11 JUL 2024

NOTE: RADAR required.
 NOTE: Initial departure headings are predicated on avoiding noise sensitive areas. Flight crew awareness and compliance is important in minimizing noise impacts on surrounding communities.

TAKEOFF MINIMUMS:

Rwys 6, 15, 24: Standard.
 Rwy 33: Standard with minimum climb of 340' per NM to 1000.

(NARRATIVE ON FOLLOWING PAGE)

NOTE: Chart not to scale.