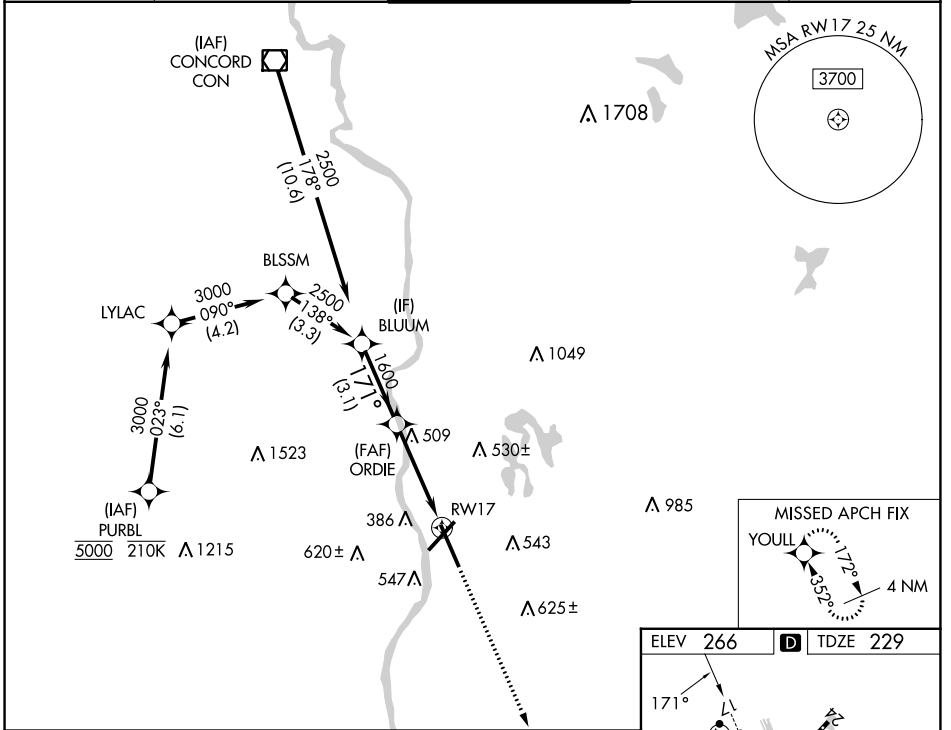


WAAS CH 93807	APP CRS 171°	Rwy Idg 8914 TDZE 229 Apt Elev 266
W17A		

RNAV (GPS) Y RWY 17

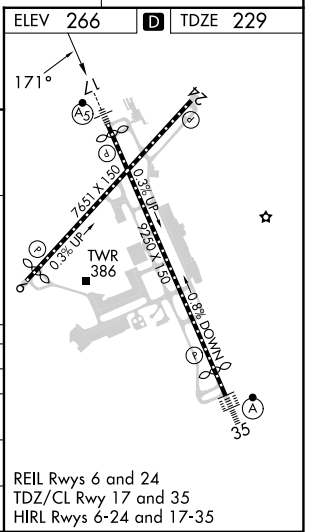
MANCHESTER BOSTON RGNL (MHT)

RNP APCH-GPS.		MALSR		MISSED APPROACH: Climb to 2000 direct YOULL and hold.	
▼ For uncompensated Baro-VNAV systems, LNAV/VNAV NA below -19°C or above 54°C. ▲ For inop ALS, increase LNAV CAT A/B visibility to RVR 5500.					
ATIS 119.55	BOSTON APP CON 124.9 269.075	MANCHESTER TOWER 121.3 239.025		GND CON 121.9	CLNC DEL 135.9



VGSI and RNAV glidepath not coincident (VGSI Angle 3.10/TCH 67).

BLUUM	2500	171°	1600	1.4 NM to RWY 17	2000	YOULL
ORDIE	1600	171°	1600	1.4 NM		
GP 3.10°						
TCH 49						
	3.1 NM		2.7 NM	1.4 NM		
CATEGORY	A	B	C	D		
LPV DA		429/18	200 (200-½)			
LNAV/VNAV DA		760/55	531 (500-1)			
LNAV MDA	760/24	531 (500-½)	760/55	531 (500-1)		
CIRCLING	880-1	614 (700-1)	980-2 714 (800-2)	1100-2¾ 834 (900-2¾)		



NE-1, 13 JUN 2024 to 11 JUL 2024

NE-1, 13 JUN 2024 to 11 JUL 2024