


APP CRS 171°	Rwy ldg 8914
	TDZE 229
	Apt Elev 266

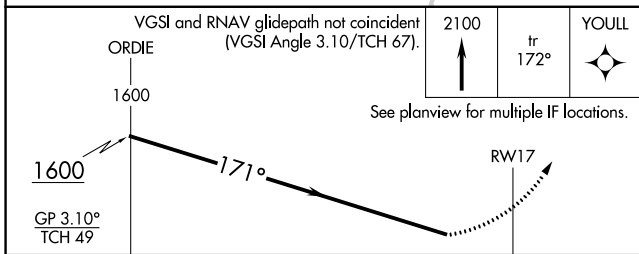
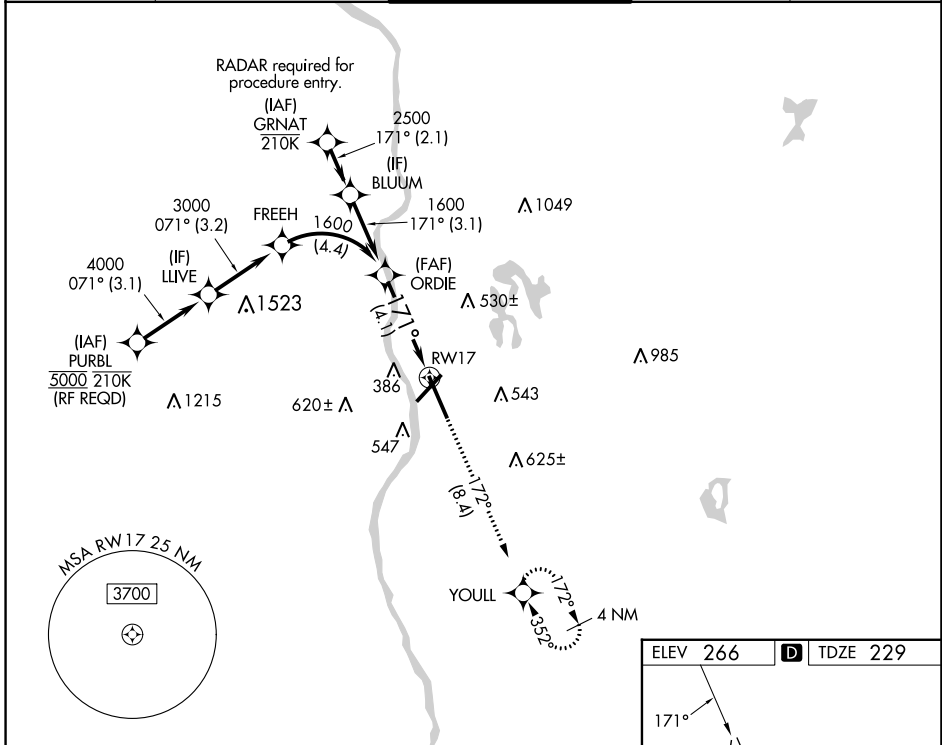
RNAV (RNP) Z RWY 17

MANCHESTER BOSTON RGNL (MHT)

▼ For uncompensated Baro-VNAV systems, procedure NA below -20°C (-4°F) or above 48°C (118°F). When local altimeter setting not received, procedure NA. GPS required. For inop MALS, increase RNP 0.11 all Cats visibility to RVR 6000, RNP 0.26 all Cats visibility to 1¾ miles, and RNP 0.30 all Cats visibility to 2 miles.

MALS  MISSED APPROACH: Climb to 2100 on track 172° to YOULL and hold.

ATIS 119.55	BOSTON APP CON 124.9 269.075	MANCHESTER TOWER 121.3 239.025	GND CON 121.9	CLNC DEL 135.9
-----------------------	--	--	-------------------------	--------------------------



ELEV 266	D TDZE 229
----------	-------------------

REIL Rwy 6 and 24
 TDZ/CL Rwy 17 and 35
 HIRL Rwy 6-24 and 17-35

CATEGORY	A	B	C	D
RNP 0.11 DA		604/40	375 (400-¾)	
RNP 0.26 DA		761/60	532 (500-1¼)	
RNP 0.30 DA		835-1½	606 (600-1½)	

AUTHORIZATION REQUIRED

NE-1, 13 JUN 2024 to 11 JUL 2024

NE-1, 13 JUN 2024 to 11 JUL 2024