

APP CRS	Rwy Idg	4098
058°	TDZE	1121
	Apt Elev	1125

RNAV (GPS) RWY 6

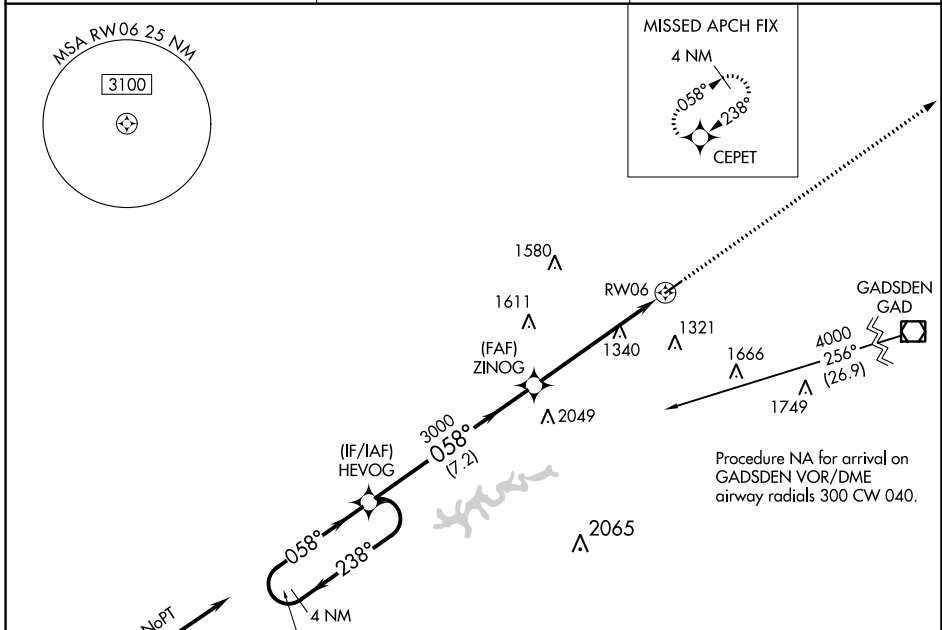
ROBBINS FLD (20A)

RNP APCH.

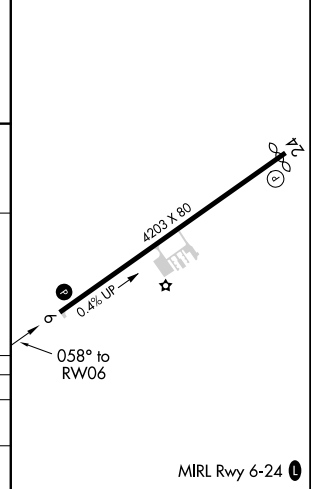
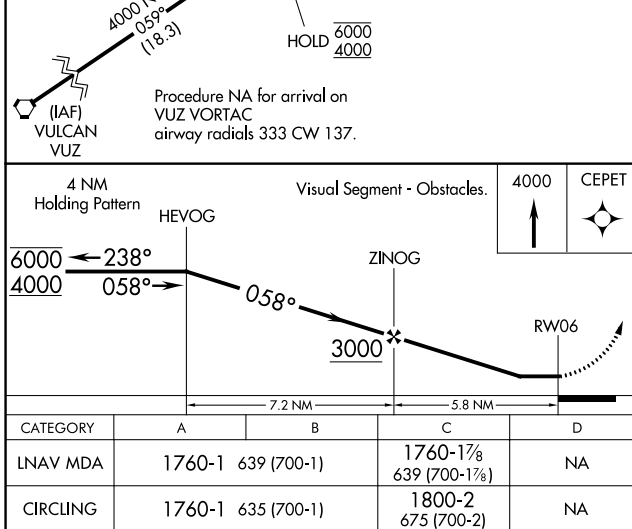
▼ Procedure NA at night. Use Albertville Rgnl/Thomas J Brumlik Fld altimeter setting, when not received, use Northeast Alabama Rgnl altimeter setting and increase all MDAs 60 feet, increase LNAV Cat C 1/2 SM. Rwy 6 helicopter visibility reduction below 1 SM NA.

▲ NA MISSED APPROACH: Climb to 4000 direct CEPET and hold.

8A0 AWOS-3PT 119.575	BIRMINGHAM APP CON 125.45 279.65	UNICOM 122.8 (CTAF)
--------------------------------	--	-------------------------------



ELEV 1125	D TDZE 1121
-----------	--------------------



MIRL Rwy 6-24

SE-4, 16 MAY 2024 to 13 JUN 2024

SE-4, 16 MAY 2024 to 13 JUN 2024