

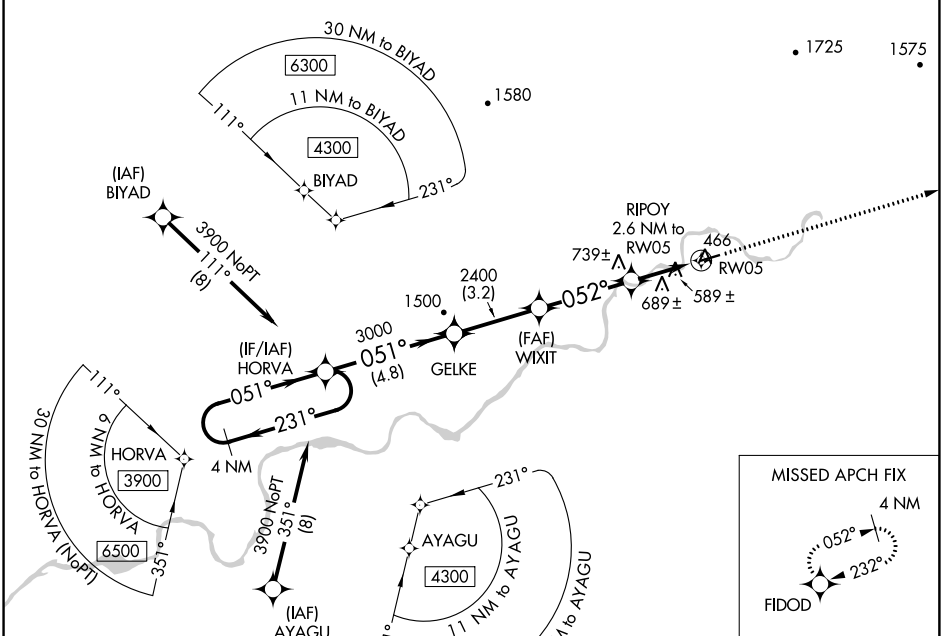
WAAS CH <b>99622</b> <b>W05A</b>	APP CRS <b>052°</b>	Rwy Idg <b>4000</b> TDZE <b>439</b> Apt Elev <b>441</b>
--	------------------------	---

# RNAV (GPS) RWY 5

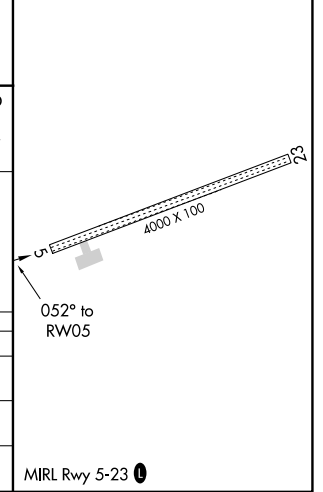
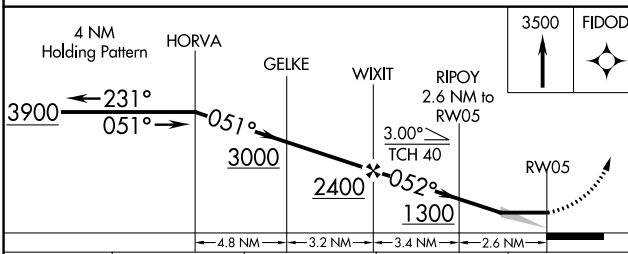
ALLAKAKET (6A8) (PFAL)

NA -44°C	DME/DME RNP-0.3 NA. Use Bestles altimeter setting.	MISSED APPROACH: Climb to 3500 direct FIDOD and hold.
-------------	--	---

BTT/PABT ASOS <b>135.45</b>	ANCHORAGE CENTER <b>124.6 352.0</b>	FAIRBANKS RADIO <b>122.2</b>	CTAF <b>122.9 0</b>
--------------------------------	--	---------------------------------	------------------------



ELEV <b>441</b>	TDZE <b>439</b>
-----------------	-----------------



CATEGORY	A	B	C	D
LP MDA	960-1	521 (600-1)	960-1½ 521 (600-1½)	NA
LNAV MDA	1060-1	621 (700-1)	1060-1¾ 621 (700-1¾)	NA
CIRCLING	1100-1 659 (700-1)	1220-1 779 (800-1)	1240-2¼ 799 (800-2¼)	NA

AK, 16 MAY 2024 to 11 JUL 2024

AK, 16 MAY 2024 to 11 JUL 2024