

WAAS CH 86640 W14A	APP CRS 144°	Rwy Idg 5000 TDZE 18 Apt Elev 18
----------------------------------------	------------------------	-------------------------------------------------------------

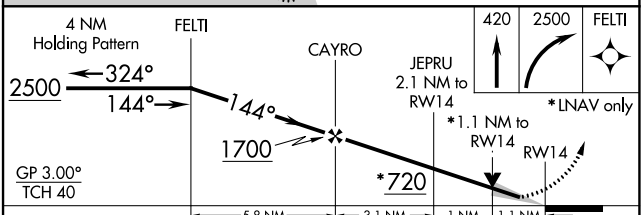
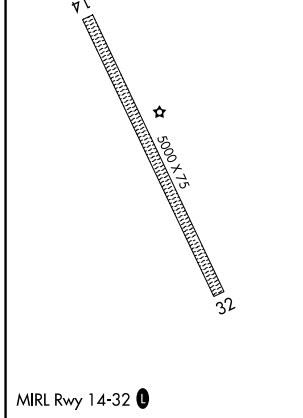
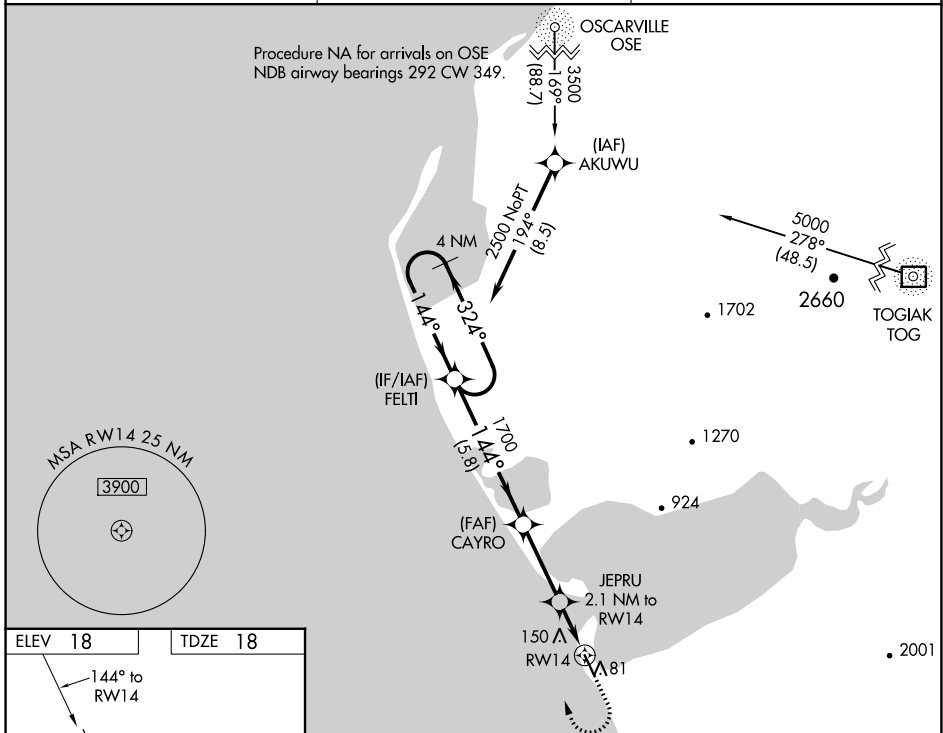
RNAV (GPS) RWY 14

PLATINUM (PTU)(PAPM)

⚠ For uncompensated Baro-VNAV systems, LNAV/VNAV NA below -20°C (-4°F) or above 54°C (130°F). Baro-VNAV and VDP NA when using Togiak altimeter setting. DME/DME RNP-0.3 NA. When local altimeter setting not received, use Togiak altimeter setting: increase LPV DA to 371 feet; increase LNAV/VNAV DA to 424 feet and all Cats visibilities $\frac{3}{8}$ SM; increase all MDA 120 feet and increase LNAV and Circling Cat C visibility $\frac{1}{4}$ SM.

MISSED APPROACH: Climb to 420 then Climbing right turn to 2500 direct FELTI and hold.

AWOS-3P 118.375	ANCHORAGE CENTER 124.2 251.1	UNICOM 122.8 (CTAF) 0
---------------------------	----------------------------------------	---------------------------------



CATEGORY	A	B	C	D
LPV DA	268-1 250 (300-1)			NA
LNAV/VNAV DA	321-1 303 (400-1)			NA
LNAV MDA	400-1	382 (400-1)	400-1 $\frac{1}{8}$ 382 (400-1 $\frac{1}{8}$)	NA
C CIRCLING	460-1 442 (500-1)	480-1 462 (500-1)	520-1 $\frac{1}{2}$ 502 (600-1 $\frac{1}{2}$)	NA

AK, 16 MAY 2024 to 11 JUL 2024

AK, 16 MAY 2024 to 11 JUL 2024