

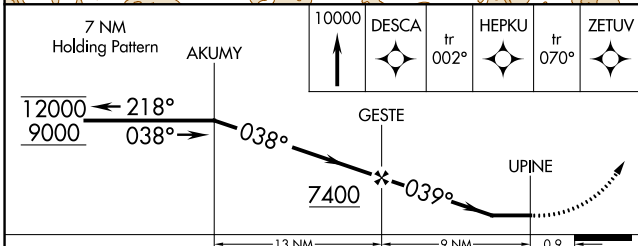
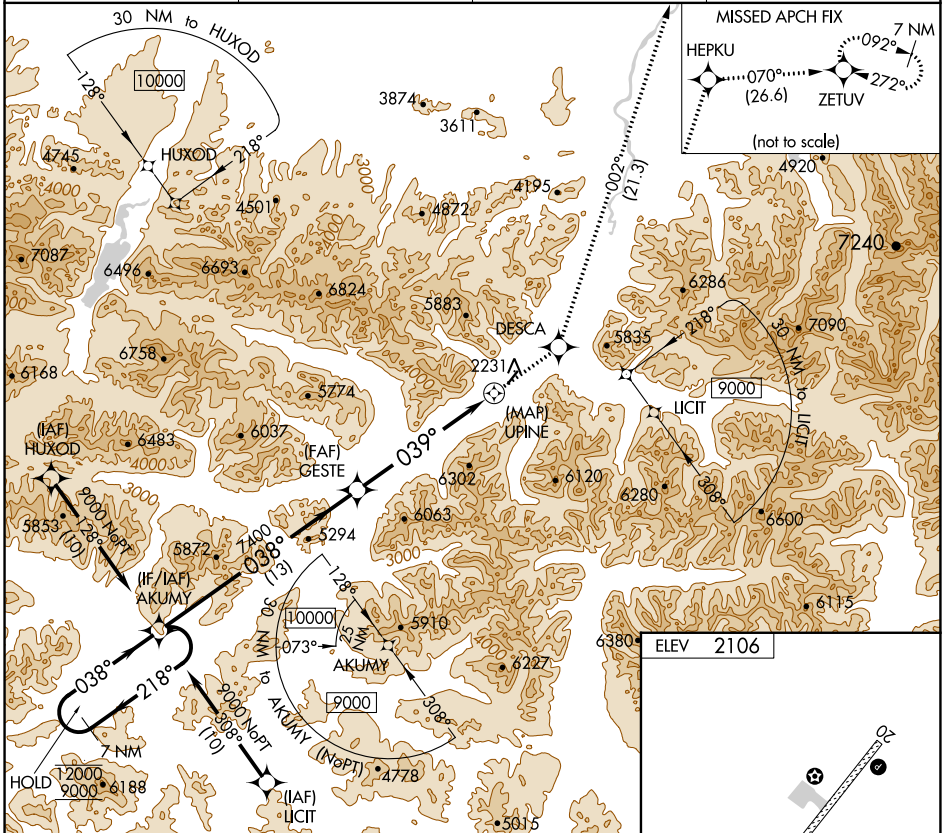
APP CRS	Rwy ldg	N/A
039°	TDZE	N/A
	Apt Elev	2106

RNAV (GPS)-A

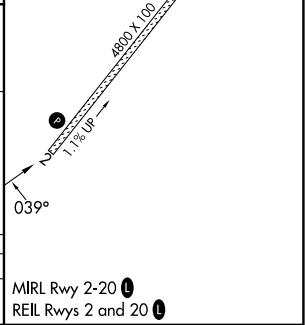
ANAKTUVUK PASS (AKP) (PAKP)

RNP APCH.		MISSED APPROACH: Climb to 10000 direct DESCA and on track 002° to HEPKU and track 070° to ZETUV and hold.	
<p>Circling NA west of Rwy 2-20. -2°C</p>			

AWOS-3P 135.75	ANCHORAGE CENTER 124.6 352.0	FAIRBANKS RADIO 122.15	UNICOM 122.8 (CTAF) ①
--------------------------	--	----------------------------------	---------------------------------



CATEGORY	A	B	C	D
CIRCLING	5620-1¼ 3514 (4000-1¼)	5620-1½ 3514 (4000-1½)	6240-3	4134 (4200-3)



AK, 16 MAY 2024 to 11 JUL 2024

AK, 16 MAY 2024 to 11 JUL 2024