

(AKUMY5.AKUMY) 23222

AL-9380 (FAA)

ANAKTUVUK PASS (AKP) (PAKP)

AKUMY FIVE DEPARTURE (OBSTACLE) (RNAV)

ANAKTUVUK PASS, ALASKA

ANCHORAGE CENTER
124.6 352.0
FAIRBANKS RADIO
122.15

BOHNU

RNAV 1 - GPS.

AGEME

INTON

FIAT

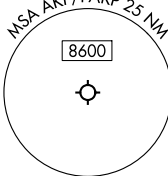
MUSDE

AKUMY

TAKEOFF MINIMUMS

Rwy 20: NA - obstacles.

Rwy 2: Standard with minimum climb of 480' per NM to 6200.



NOTE: Chart not to scale.

DEPARTURE ROUTE DESCRIPTION

TAKEOFF RUNWAY 2: Climb on heading 022° to 2607, then direct MUSDE, then on depicted route to AKUMY, maintain 9000 or higher as assigned.

AKUMY FIVE DEPARTURE (OBSTACLE) (RNAV)

(AKUMY5.AKUMY) 10AUG23

ANAKTUVUK PASS, ALASKA
ANAKTUVUK PASS (AKP) (PAKP)

AK, 16 MAY 2024 to 11 JUL 2024

AK, 16 MAY 2024 to 11 JUL 2024