

| | | |
|-------------|----------|-------------|
| APP CRS | Rwy Idg | 3900 |
| 046° | TDZE | 989 |
| | Apt Elev | 989 |

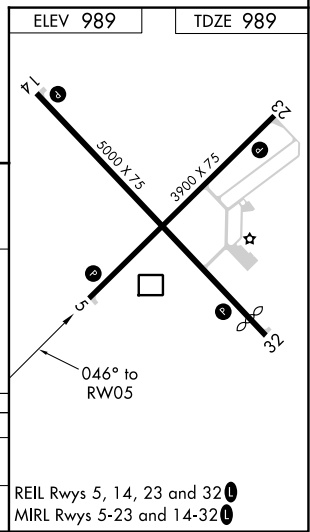
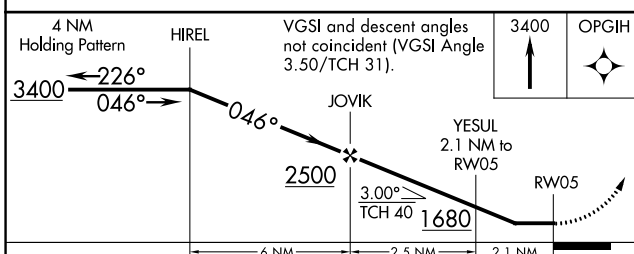
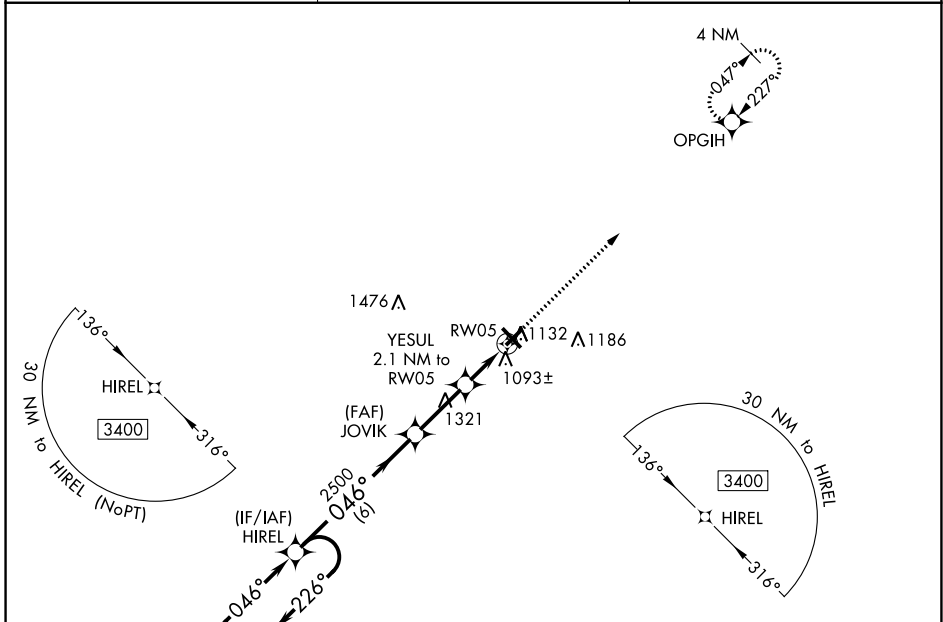
RNAV (GPS) RWY 5

BURNETT COUNTY (RZN)

⚠ DME/DME RNP-0.3 NA. Helicopter visibility reduction below 1 SM NA.
⚠ Night Landing: Rwy 5, 23, 32 NA. When local altimeter setting not received, use Rush City, MN altimeter setting and increase all MDA 80 feet; increase LNAV Cat C/D visibility 3/8 mile, and Circling Cat C/D visibility 1/4 mile.

MISSED APPROACH: Climb to 3400 direct OPGIH and hold.

| | | |
|--------------------------|---|--|
| AWOS-3 118.325 | MINNEAPOLIS CENTER 121.05 235.775 | UNICOM 122.8 (CTAF) 📶 |
|--------------------------|---|--|



| | | | | |
|-------------------|--------------------|----------------------|----------------------|---|
| CATEGORY | A | B | C | D |
| LNAV MDA | 1360-1 371 (400-1) | | | |
| C CIRCLING | 1440-1 451 (500-1) | 1540-1½ 551 (600-1½) | 1680-2¼ 691 (700-2¼) | |

EC-3, 16 MAY 2024 to 13 JUN 2024

EC-3, 16 MAY 2024 to 13 JUN 2024