

APP CRS	Rwy Idg	<b>3900</b>
<b>226°</b>	TDZE	<b>989</b>
	Apt Elev	<b>989</b>

# RNAV (GPS) RWY 23

BURNETT COUNTY (RZN)

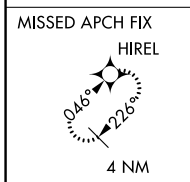
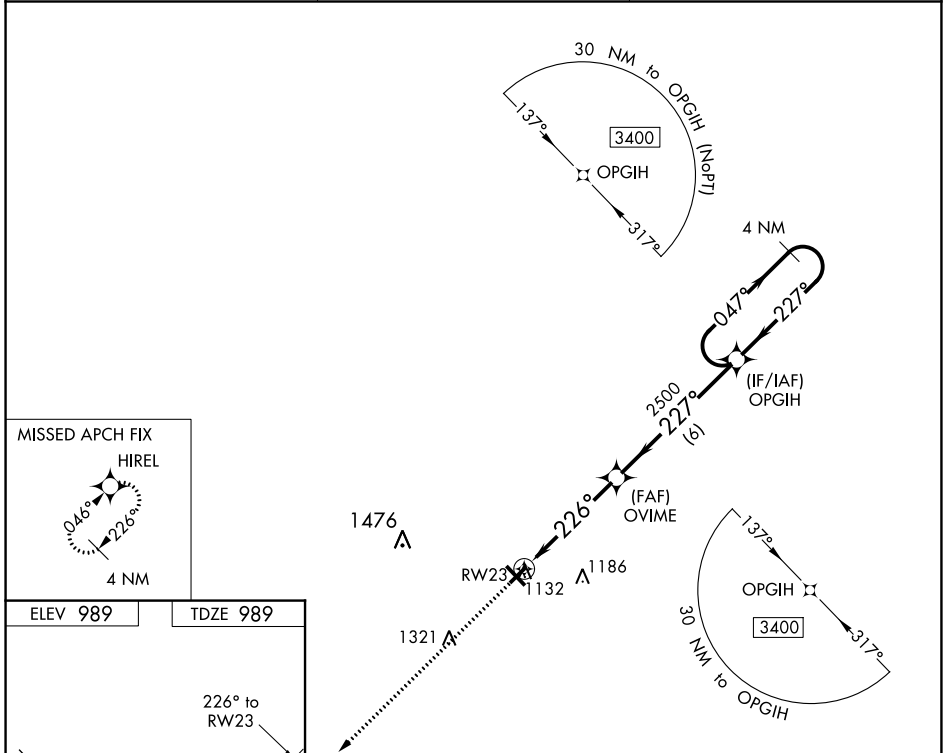
**⚠** DME/DME RNP-0.3 NA. When local altimeter setting not received, use Rush City, MN altimeter setting and increase all MDA 80 feet; increase LNAV Cat C/D visibility 1/8 mile, and Circling Cat C/D visibility 1/4 mile. Helicopter visibility reduction below 1 SM NA. Night landing: Rwy 5, 23, 32, NA.

**MISSED APPROACH:** Climb to 3400 direct HIREL and hold.

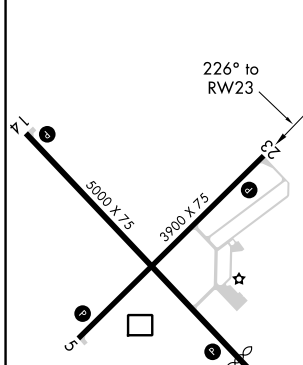
AWOS-3  
**118.325**

MINNEAPOLIS CENTER  
**121.05 235.775**

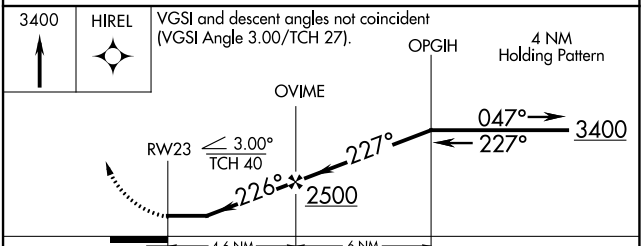
UNICOM  
**122.8** (CTAF) **0**



ELEV 989 TDZE 989



REIL Rws 5, 14, 23 and 32	<b>0</b>
MIRL Rws 5-23 and 14-32	<b>0</b>



CATEGORY	A	B	C	D
LNAV MDA	1440-1	451 (500-1)	1440-1 <sup>3</sup> / <sub>8</sub>	451 (500-1 <sup>3</sup> / <sub>8</sub> )
<b>C</b> CIRCLING	1440-1	451 (500-1)	1540-1 <sup>1</sup> / <sub>2</sub> 551 (600-1 <sup>1</sup> / <sub>2</sub> )	1680-2 <sup>1</sup> / <sub>4</sub> 691 (700-2 <sup>1</sup> / <sub>4</sub> )

EC-3, 16 MAY 2024 to 13 JUN 2024

EC-3, 16 MAY 2024 to 13 JUN 2024