

CLANTON, ALABAMA

AL-6738 (FAA)

20198

WAAS CH 86739 W08A	APP CRS 082°	Rwy Idg TDZE Apt Elev	4007 585 585
--	------------------------	-----------------------------	---

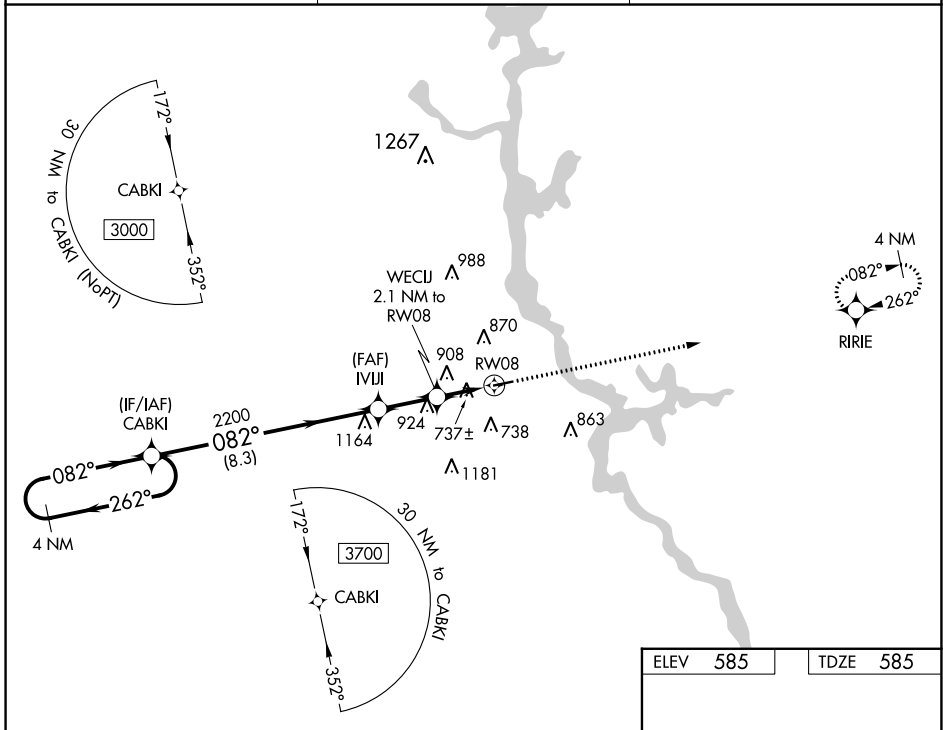
RNAV (GPS) RWY 8

CHILTON COUNTY (02A)

⚠ NA DME/DME RNP-0.3 NA. Helicopter visibility reduction below 1 SM NA. Use Shelby County altimeter setting; when not received, use Merkel Field Sylacauga Muni altimeter setting and increase all MDA 20 feet and LNAV visibility Cat C/D ½ mile. Procedure NA at night.

⚠ NA MISSED APPROACH: Climb to 3300 direct RIRIE and hold.

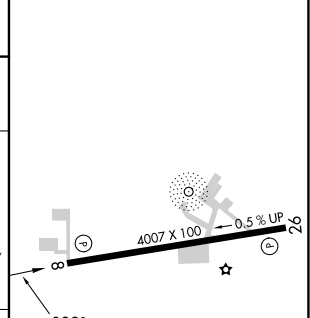
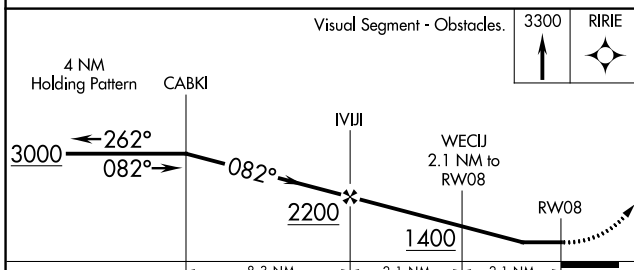
EET ASOS-3 134.325	MONTGOMERY APP CON ★ 121.2 269.05	UNICOM 122.8 (CTAF) 0
------------------------------	---	---------------------------------



SE-4, 16 MAY 2024 to 13 JUN 2024

SE-4, 16 MAY 2024 to 13 JUN 2024

ELEV 585	TDZE 585
----------	----------



CATEGORY	A	B	C	D
LP MDA	1040-1	455 (500-1)	1040-1 $\frac{3}{8}$	455 (500-1 $\frac{1}{2}$)
LNAV MDA	1220-1	635 (700-1)	1220-1 $\frac{3}{4}$	635 (700-1 $\frac{3}{4}$)
C CIRCLING	1260-1	675 (700-1)	1280-2 695 (700-2)	1600-3 1015 (1100-3)

MIRL Rwy 8-26 **0**
REIL Rws 8 and 26

CLANTON, ALABAMA
Orig 15SEP16

32°51'N-86°37'W

RNAV (GPS) RWY 8