

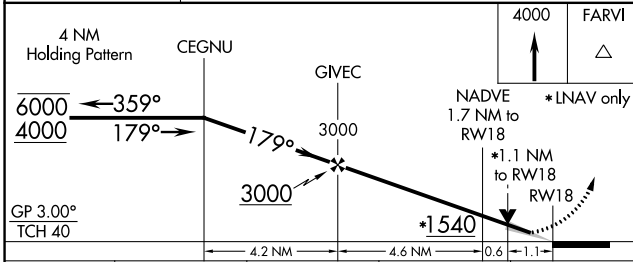
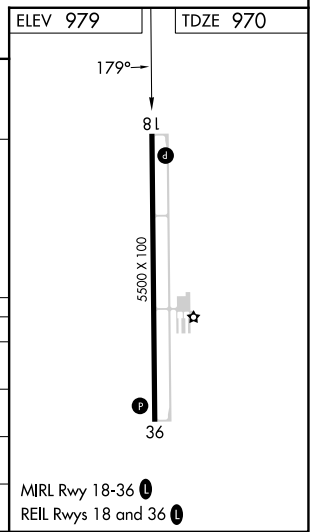
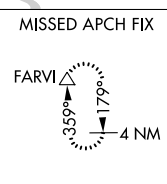
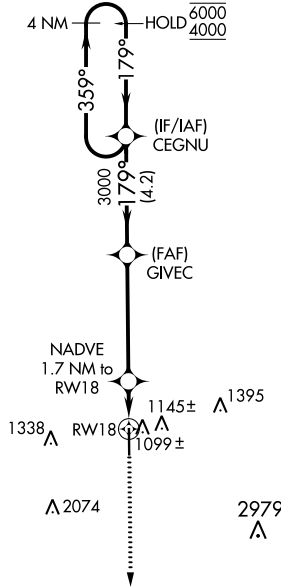
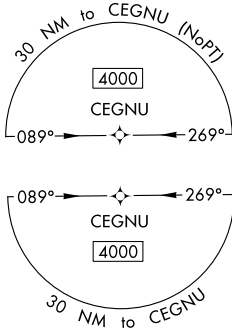
WAAS CH <b>53427</b> <b>W18A</b>	APP CRS <b>179°</b>	Rwy Idg TDZE Apt Elev	<b>5500</b> <b>970</b> <b>979</b>
--	------------------------	-----------------------------	---

# RNAV (GPS) RWY 18

JAMES H CONNELL FLD AT INDEPENDENCE MUNI (IIB)

RNP APCH.	For uncompensated Baro-VNAV systems, LNAV/VNAV NA below -16°C or above 54°C.	MISSED APPROACH: Climb to 4000 direct FARVI and hold, continue climb-in-hold to 4000.
-----------	--	---

AWOS-3 <b>120.825</b>	WATERLOO APP CON ★ <b>118.9 251.15</b>	UNICOM <b>122.8</b> (CTAF) <b>0</b>
--------------------------	---	--



CATEGORY	A	B	C	D
LPV DA		1220-3/4	250 (300-3/4)	
LNAV/VNAV DA		1280-7/8	310 (400-7/8)	
LNAV MDA	1360-1	390 (400-1)	1360-1 1/8	390 (400-1 1/8)
<b>C</b> CIRCLING	1500-1	521 (600-1)	1700-2 721 (800-2)	2440-3 1461 (1500-3)

MIRL Rwy 18-36 **0**  
REIL Rwys 18 and 36 **0**

NC-3, 16 MAY 2024 to 13 JUN 2024

NC-3, 16 MAY 2024 to 13 JUN 2024

# RNAV (GPS) RWY 18