

WAVERLY, IOWA

AL-6558 (FAA)

22307

WAAS CH <b>58243</b> <b>W11A</b>	APP CRS <b>107°</b>	Rwy Idg TDZE <b>992</b> Apt Elev <b>992</b>	<b>3200</b>
--	------------------------	---	-------------

# RNAV (GPS) RWY 11

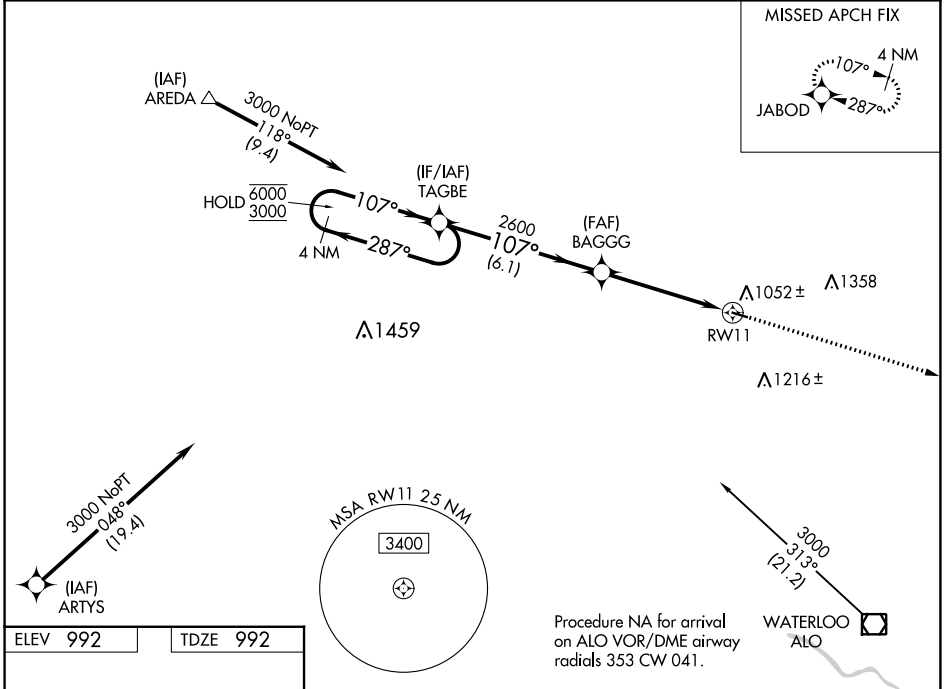
WAVERLY MUNI (C25)

RNP APCH.

**⚠** Rwy 11 helicopter visibility reduction below 1 SM NA. Baro-VNAV NA.  
**⚠** NA Use Waterloo altimeter setting. Straight-in and Circling Rwy 11 NA at night.

MISSED APPROACH: Climb to 3300 direct JABOD and hold.

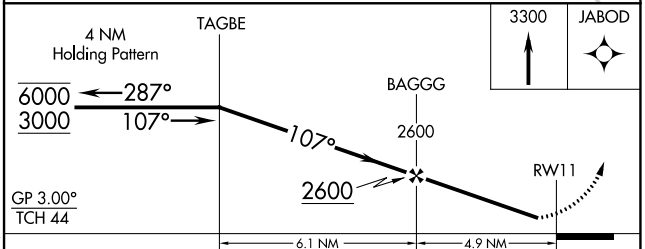
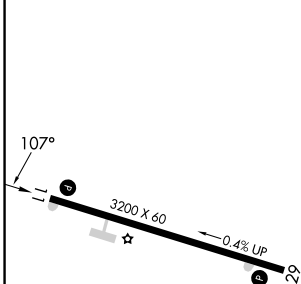
ALO ASOS <b>120.65</b>	WATERLOO APP CON* <b>118.9 251.15</b>	UNICOM <b>122.8 (CTAF)</b>
---------------------------	--	-------------------------------



NC-3, 16 MAY 2024 to 13 JUN 2024

NC-3, 16 MAY 2024 to 13 JUN 2024

ELEV 992	TDZE 992
----------	----------



CATEGORY	A	B	C	D
LPV DA		1287-1 295 (300-1)		NA
LNAV/VNAV DA		1334-1 342 (400-1)		NA
LNAV MDA	1540-1	548 (600-1)	1540-1½ 548 (600-1½)	NA
<b>C</b> CIRCLING	1540-1 548 (600-1)	1620-1 628 (700-1)	1620-1¾ 628 (700-1¾)	NA

REIL Rwy 11 and 29 **Ⓛ**  
 MIRL Rwy 11-29 **Ⓛ**

WAVERLY, IOWA  
 Orig 31DEC20

42°45'N-92°30'W

# WAVERLY MUNI (C25)

# RNAV (GPS) RWY 11