

WAAS CH <b>60929</b> <b>W29A</b>	APP CRS <b>289°</b>	Rwy Idg TDZE Apt Elev	<b>6000</b> <b>308</b> <b>310</b>
--	------------------------	-----------------------------	---

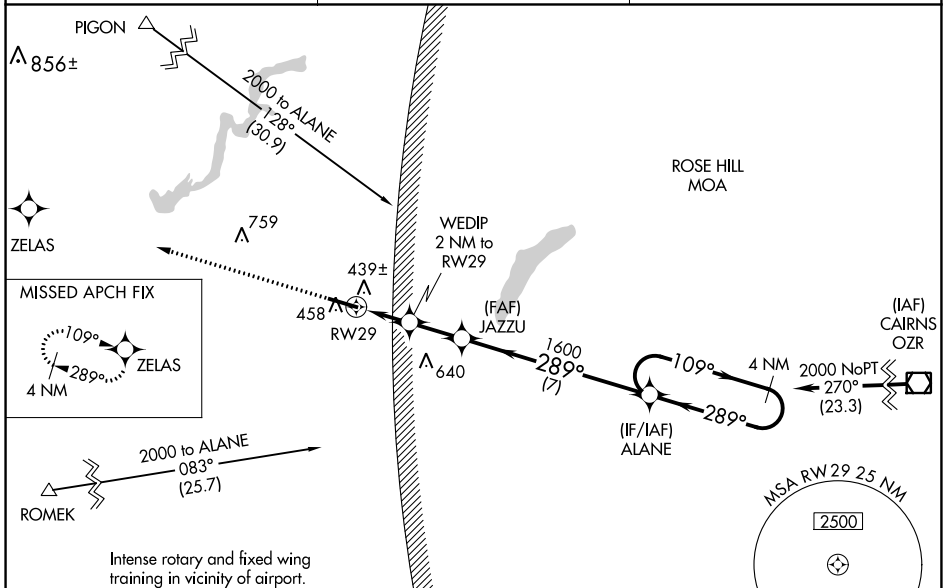
# RNAV (GPS) RWY 29

SOUTH ALABAMA RGNL AT BILL BENTON FLD (79J)

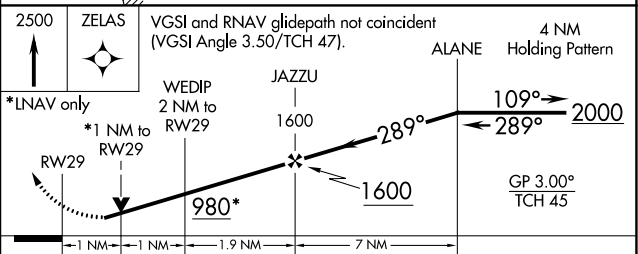
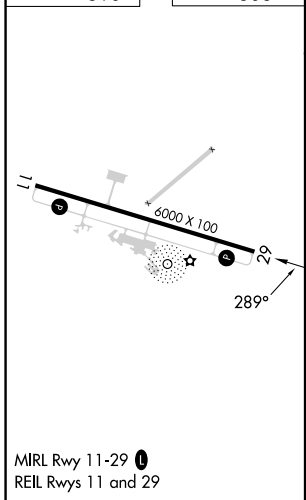
**⚠** For uncompensated Baro-VNAV systems, LNAV/VNAV NA below -15°C (5°F) or above 54°C (130°F). DME/DME RNP-0.3 NA. Helicopter visibility reduction below ¾ SM NA. When local altimeter setting not received, use Cairns AAF (Fort Novosel) altimeter setting and increase all DA 82 feet, all MDA 100 feet. Increase LPV and LNAV/VNAV visibilities ¾ mile, LNAV and Circling Cat C and D ¼ mile. Baro-VNAV and VDP NA when using Cairns AAF (Fort Novosel) altimeter setting.

MISSED APPROACH: Climb to 2500 direct ZELAS and hold.

ASOS <b>134.875</b>	CAIRNS APP CON ★ <b>133.45 239.275</b>	UNICOM <b>122.8 (CTAF) 0</b>
------------------------	---	---------------------------------



ELEV 310 TDZE 308



CATEGORY	A	B	C	D
LPV DA	630-1		322 (400-1)	
LNAV/VNAV DA	628-1		320 (400-1)	
LNAV MDA	720-1	412 (500-1)	720-1½	412 (500-1½)
CIRCLING	820-1	510 (600-1)	860-1½ 550 (600-1½)	940-2 630 (700-2)

# RNAV (GPS) RWY 29

SE-4, 16 MAY 2024 to 13 JUN 2024

SE-4, 16 MAY 2024 to 13 JUN 2024