

NDB JULY <b>264</b>	APP CRS <b>240°</b>	Rwy Idg TDZE Apt Elev	<b>N/A</b> <b>N/A</b> <b>310</b>
------------------------	------------------------	-----------------------------	--

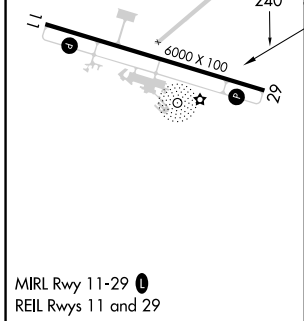
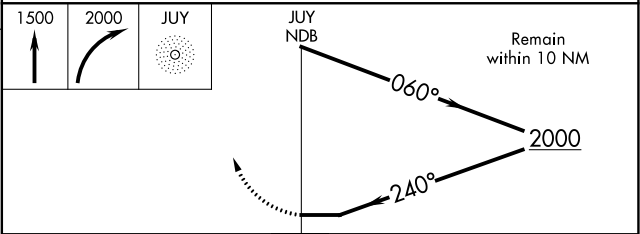
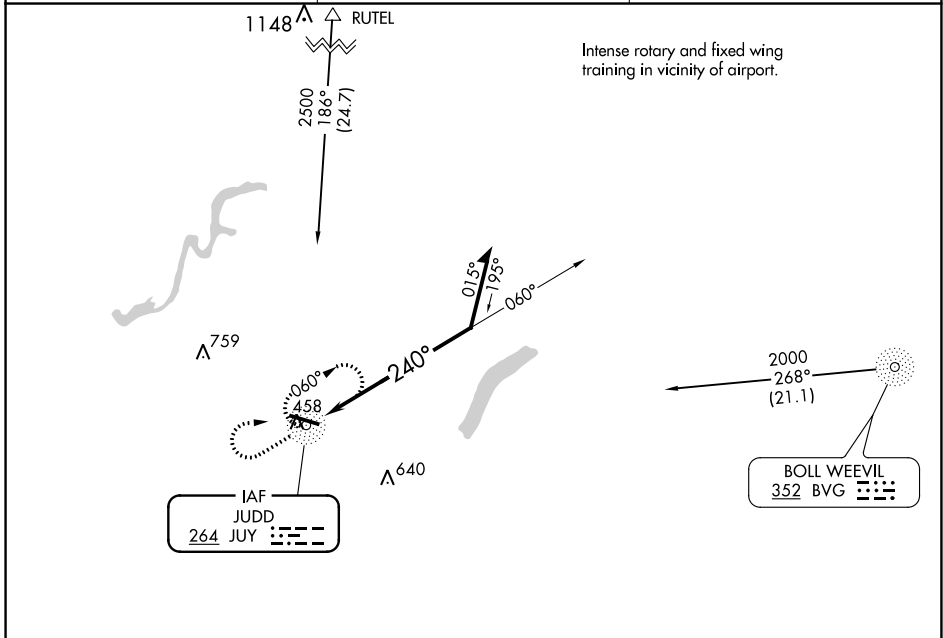
# NDB-A

## SOUTH ALABAMA RGNL AT BILL BENTON FIELD (79J)

**⚠** When local altimeter setting not received, use Cairns AAF (Fort Novosel) altimeter setting and increase all MDA 100 feet.

**⚠** MISSED APPROACH: Climb to 1500 then climbing right turn to 2000 direct JULY NDB and hold.

ASOS <b>134.875</b>	CAIRNS APP CON ★ <b>133.45 239.275</b>	UNICOM <b>122.8 (CTAF) 0</b>
------------------------	---	---------------------------------



CATEGORY	A	B	C	D
CIRCLING	980-1	670 (700-1)	980-1 <sup>3</sup> / <sub>4</sub> 670 (700-1 <sup>3</sup> / <sub>4</sub> )	980-2 670 (700-2)

# NDB-A

SE-4, 16 MAY 2024 to 13 JUN 2024

SE-4, 16 MAY 2024 to 13 JUN 2024