

WAAS CH 65903 W01A	APP CRS 007°	Rwy Idg 4206 TDZE 794 Apt Elev 798
--	------------------------	---

RNAV (GPS) RWY 1

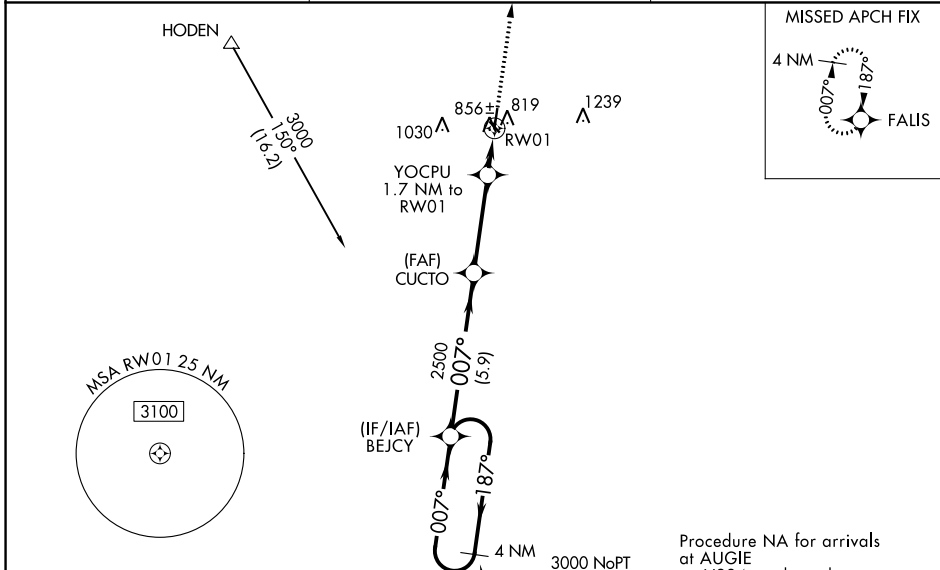
SKYHAVEN (RCM)

RNP APCH - GPS.

⚠ Circling Rwy 32 NA at night. Baro-VNAV NA when using Whiteman AFB altimeter setting. For uncompensated Baro-VNAV systems, LNAV/VNAV NA below -16°C or above 54°C. Rwy 1 helicopter visibility reduction below ¼ SM NA. When local altimeter setting not received, use Knob Noster altimeter setting and increase LPV DA to 1083 feet and all visibilities ½ SM. Increase LNAV/VNAV DA to 1194 feet and all visibilities ½ SM. Increase all MDAs 40 feet and LNAV visibility Cat C ½ SM, and Circling visibility Cat C ½ SM.

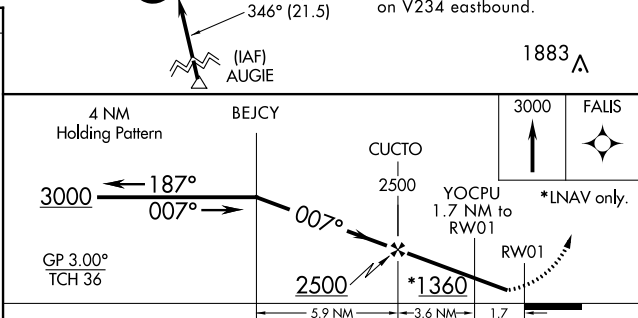
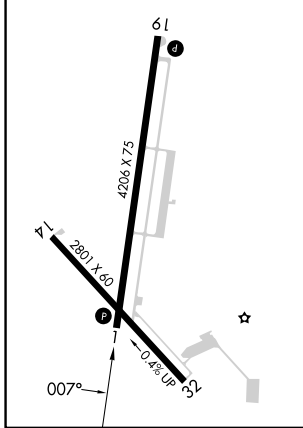
MISSED APPROACH: Climb to 3000 direct FALIS and hold.

AWOS-3PT 119.575	WHITEMAN APP CON * 127.45 284.0	UNICOM 123.0 (CTAF) 0
----------------------------	---	---------------------------------



ELEV 798	TDZE 794
----------	----------

REIL Rwy 1 and 19
REIL Rwy 14 and 32
MIRL Rwy 1-19 and 14-32



CATEGORY	A	B	C	D
LPV DA	1044-1	250 (300-1)		NA
LNAV/VNAV DA	1155-1¼	361 (400-1¼)		NA
LNAV MDA	1220-1	426 (500-1)	1220-1¼ 426 (500-1¼)	NA
C CIRCLING	1260-1 462 (500-1)	1340-1 542 (600-1)	1380-1½ 582 (600-1½)	NA

NC-3, 16 MAY 2024 to 13 JUN 2024

NC-3, 16 MAY 2024 to 13 JUN 2024