

MESQUITE, TEXAS

AL-6444 (FAA)

21112

WAAS CH 78401 W36A	APP CRS 358°	Rwy Idg 6000 TDZE 443 Apt Elev 447
--	------------------------	---

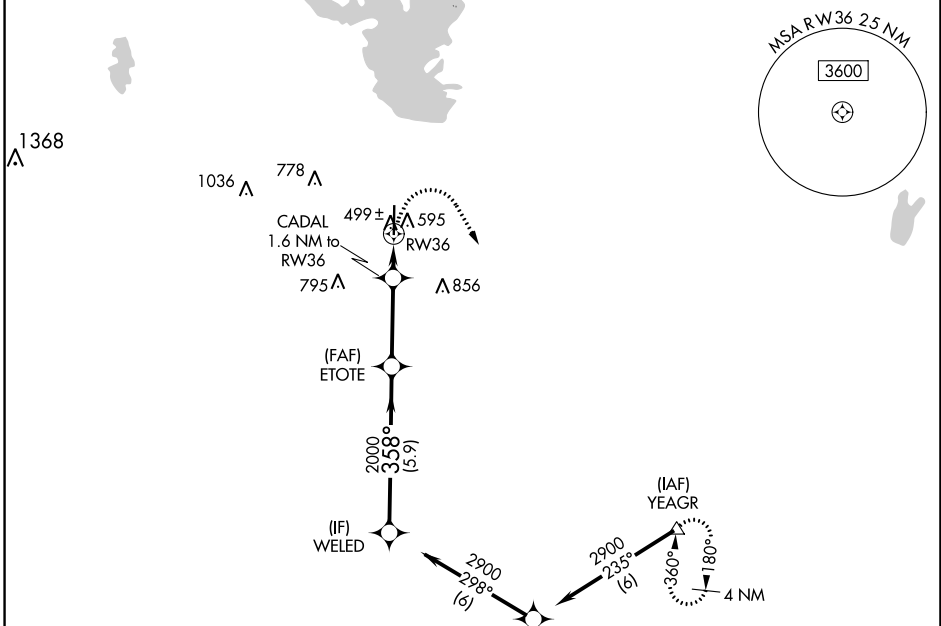
RNAV (GPS) RWY 36

MESQUITE METRO (HQZ)

⚠ DME/DME RNP-0.3 NA. When local altimeter setting not received, use Dallas Love Fld altimeter setting and increase all DA/MDA 60 feet. Increase LPV all Cats visibility to 1 mile, increase Circling Cat C visibility to 2 ¼ mile. VDP NA when using Dallas Love Fld altimeter setting.

MISSED APPROACH:
Climbing right turn to 3000 direct YEAGR and hold.

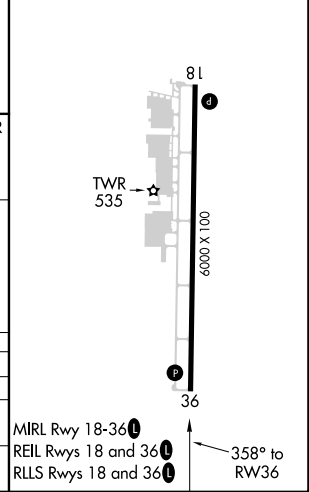
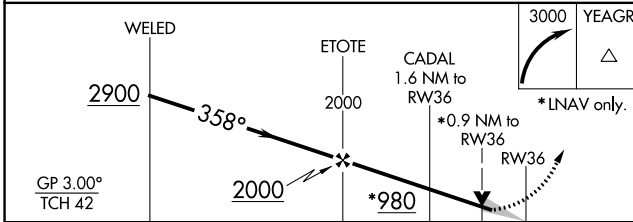
AWOS-3 118.175	REGIONAL APP CON 125.2 343.65	MESQUITE TOWER ★ 120.3 (CTAF) 0	GND CON 118.85	UNICOM 123.05
--------------------------	---	---	--------------------------	-------------------------



SC-2, 16 MAY 2024 to 13 JUN 2024

SC-2, 16 MAY 2024 to 13 JUN 2024

ELEV 447	TDZE 443
----------	----------



CATEGORY	A	B	C	D
LPV DA	693-7/8	250 (300-7/8)		NA
RNAV MDA	760-1	317 (400-1)		NA
C CIRCLING	960-1	513 (600-1)	1160-2 713 (800-2)	NA

MESQUITE, TEXAS
Amdt 2 25JUN15

32°45'N-96°32'W

MESQUITE METRO (HQZ)

RNAV (GPS) RWY 36