

MESQUITE, TEXAS

AL-6444 (FAA)

21112

| | | |
|--|------------------------|---|
| WAAS CH 58301 W18A | APP CRS 178° | Rwy Idg 6000 TDZE 447 Apt Elev 447 |
|--|------------------------|---|

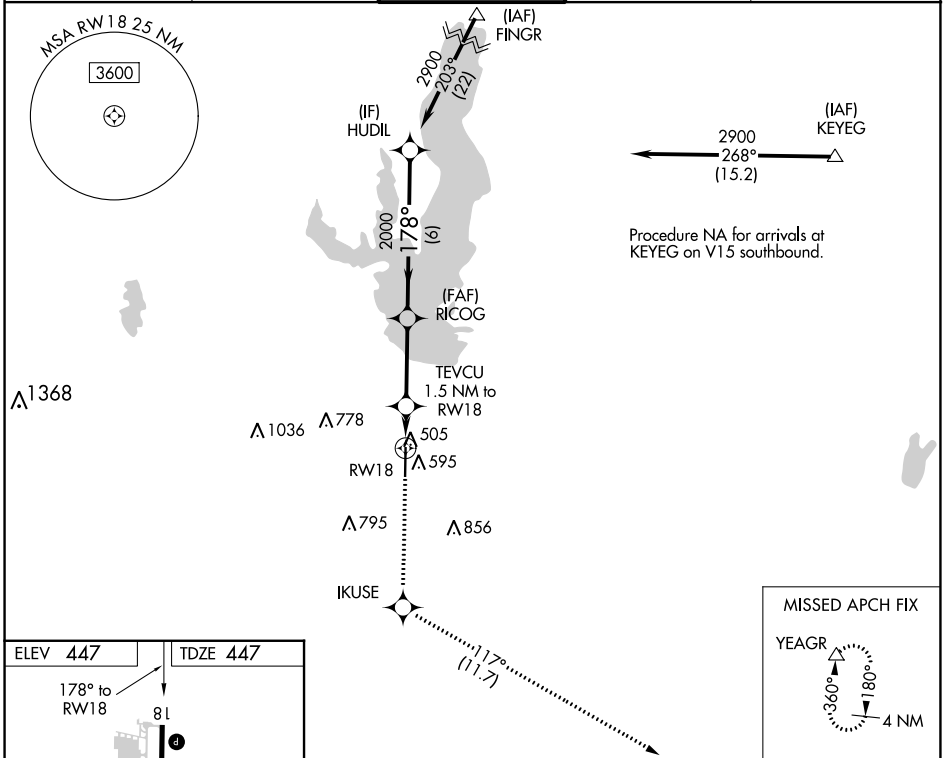
RNAV (GPS) RWY 18

MESQUITE METRO (HQZ)

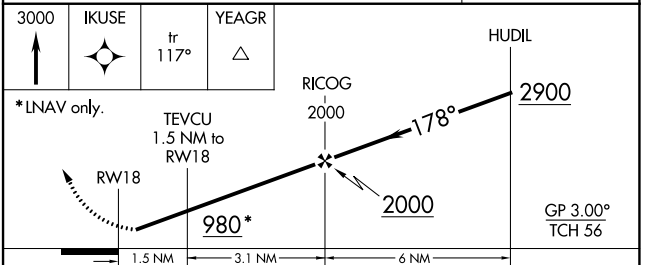
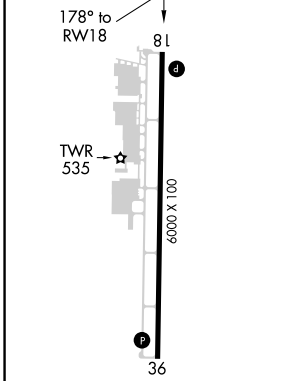
⚠ DME/DME RNP-0.3 NA. When local altimeter setting not received, use Dallas Love Fld altimeter setting and increase all DA/MDA 60 feet. Increase LPV all Cats visibility to 1 mile, LNAV Cat C visibility to 1 3/8 and Circling Cat C visibility to 2 1/4. Helicopter visibility reduction below 3/4 SM NA.

MISSED APPROACH: Climb to 3000 direct IKUSE then on track 117° to YEAGR and hold.

| | | | | |
|--------------------------|---|---|--------------------------|-------------------------|
| AWOS-3 118.175 | REGIONAL APP CON 125.2 343.65 | MESQUITE TOWER★ 120.3 (CTAF) 0 | GND CON 118.85 | UNICOM 123.05 |
|--------------------------|---|---|--------------------------|-------------------------|



| | |
|-----------------|-----------------|
| ELEV 447 | TDZE 447 |
|-----------------|-----------------|



| CATEGORY | A | B | C | D |
|-------------------|-----------------------|-------------|------------------------------|----|
| LPV DA | 697-3/4 250 (300-3/4) | | | NA |
| LNAV MDA | 860-1 | 413 (500-1) | 860-1 1/8 413 (500-1 1/8) | NA |
| C CIRCLING | 960-1 | 513 (600-1) | 1160-2 713 (800-2) | NA |

MIRL Rwy 18-36 **0**
REIL Rwy 18 and 36 **0**
RLS Rwy 18 and 36 **0**

MESQUITE, TEXAS
Amdt 1A 25JUN15

32°45'N-96°32'W

MESQUITE METRO (HQZ)
RNAV (GPS) RWY 18

SC-2, 16 MAY 2024 to 13 JUN 2024

SC-2, 16 MAY 2024 to 13 JUN 2024