

KINGDOM FOUR DEPARTURE

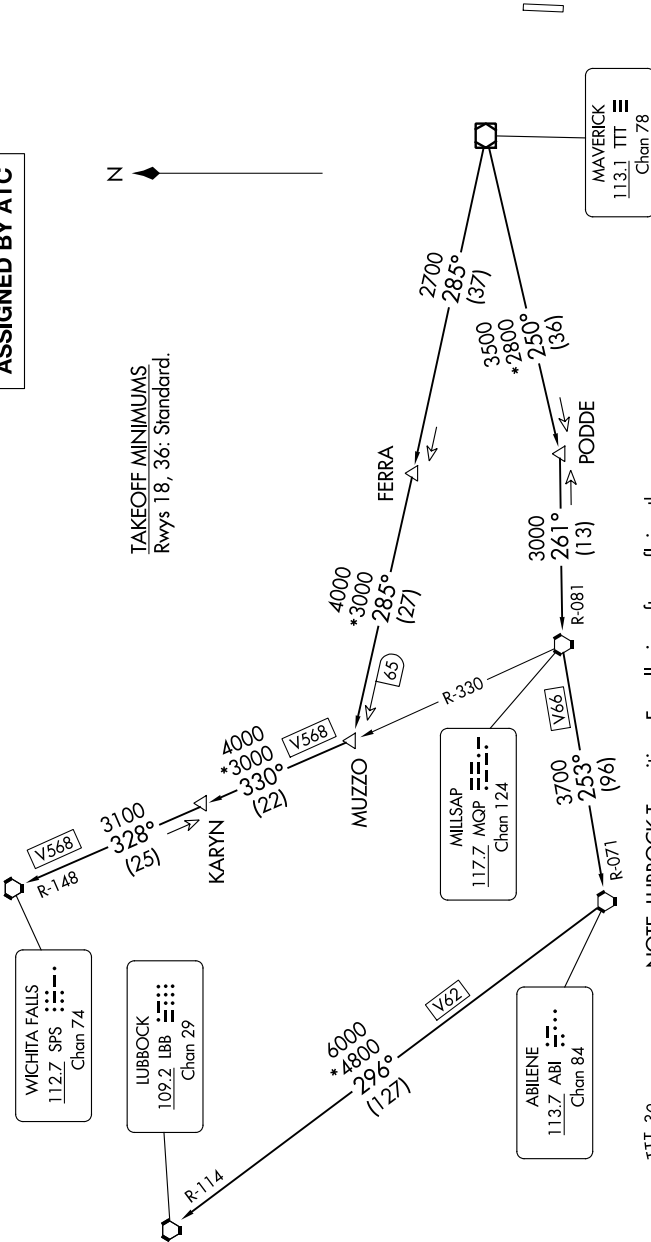
REGIONAL DEP CON
125.2 343.65
CTAF
120.3

**TOP ALTITUDE:
ASSIGNED BY ATC**

RADAR and DME required.



TAKEOFF MINIMUMS
Rwys 18, 36: Standard.



- NOTE: LUBBOCK Transition: For all aircraft overlying the MQP VORTAC westbound or direct.
- NOTE: MILLSAP Transition: For all aircraft overlying the MQP VORTAC westbound or direct.
- NOTE: PODDE Transition: ATC assigned.
- NOTE: WICHITA FALLS Transition: For all aircraft landing within the Wichita Falls terminal area or overlying the SPS VORTAC.
- NOTE: For all aircraft requesting 17000 and below.

NOTE: Chart not to scale.

(CONTINUED ON FOLLOWING PAGE)