

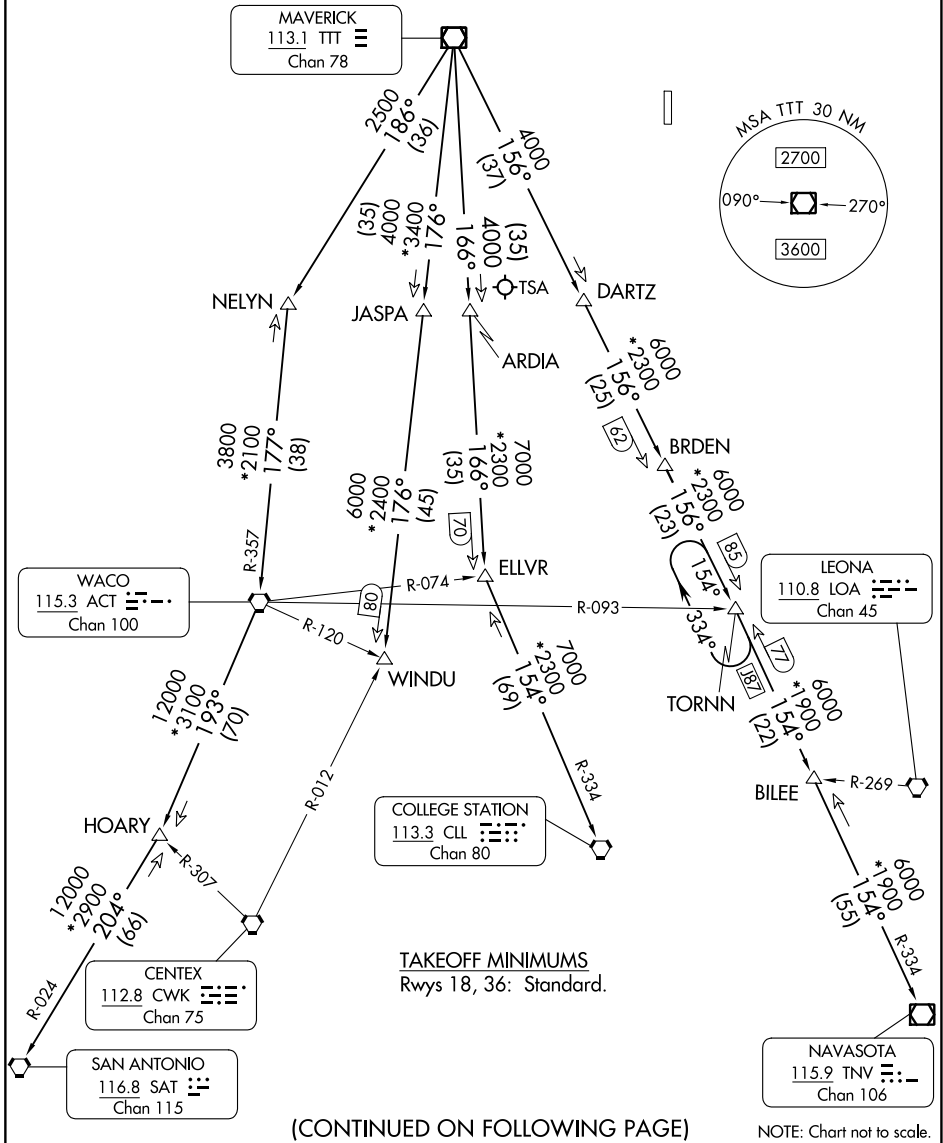
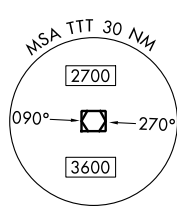
# JOE POOL SEVEN DEPARTURE

REGIONAL DEP CON  
125.2 343.65  
CTAF  
120.3

RADAR and DME required.

**TOP ALTITUDE:  
ASSIGNED BY ATC**

MAVERICK  
113.1 TTT  
Chan 78



TAKEOFF MINIMUMS  
Rwys 18, 36: Standard.

(CONTINUED ON FOLLOWING PAGE)

NOTE: Chart not to scale.

SC-2, 16 MAY 2024 to 13 JUN 2024

SC-2, 16 MAY 2024 to 13 JUN 2024

# JOE POOL SEVEN DEPARTURE