

WAAS CH <b>40216</b> <b>W09A</b>	APP CRS <b>094°</b>	Rwy Idg <b>5390</b> TDZE <b>569</b> Apt Elev <b>569</b>
--	------------------------	---

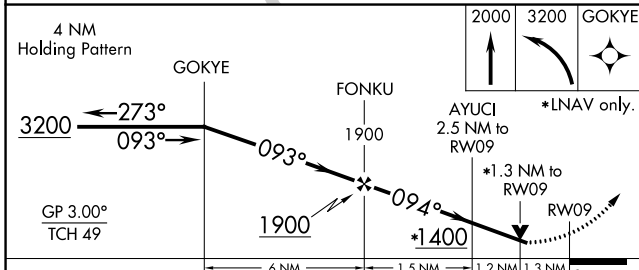
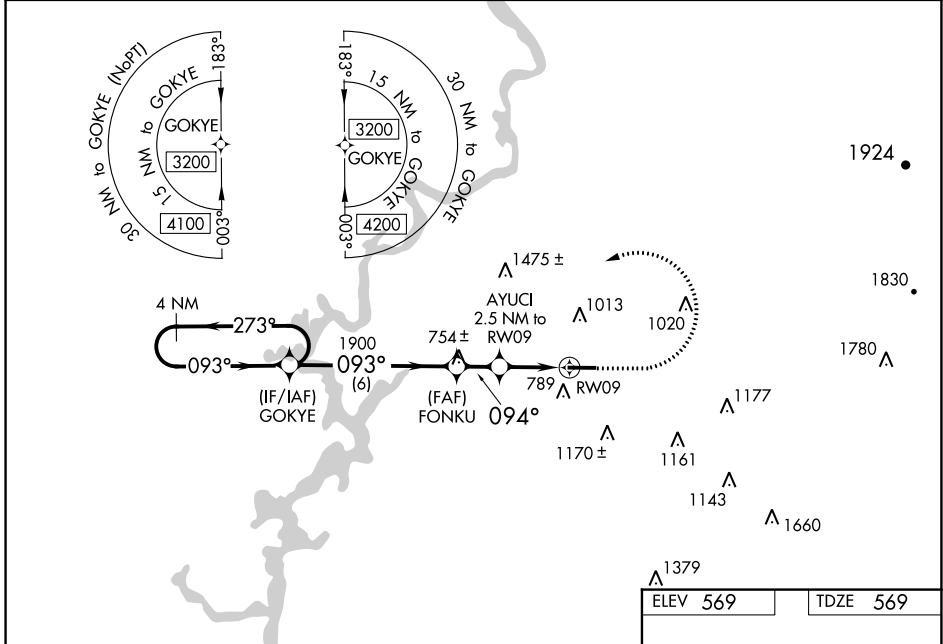
# RNAV (GPS) RWY 9

MERKEL FLD SYLACAUGA MUNI (SCD)

**⚠** Baro-VNAV NA when using Birmingham altimeter setting. For uncompensated Baro-VNAV systems, LNAV/VNAV NA below -20°C (-4°F) or above 54°C (130°F).  
**⚠** DME/DME RNP-0.3 NA. Helicopter visibility reduction below 3/4 SM NA. When local altimeter setting not received; use Birmingham altimeter setting and increase LPV DA to 1066, LNAV/VNAV DA to 1139 and all visibilities 3/8 mile. Increase all MDA 100 feet and LNAV Cats C and D visibility 1/8 mile. VDP NA when using Birmingham altimeter setting.

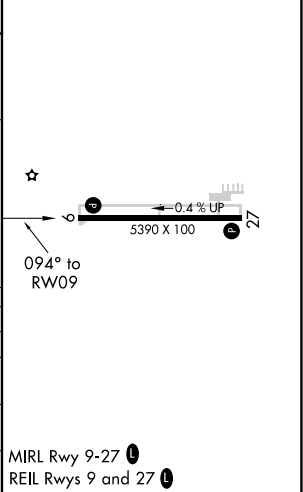
MISSED APPROACH: Climb to 2000 then climbing left turn to 3200 direct GOKYE and hold.

AWOS-3PT <b>119.125</b>	BIRMINGHAM APP CON <b>123.8 256.8</b>	UNICOM <b>122.8 (CTAF) 0</b>
----------------------------	--	---------------------------------



ELEV <b>569</b>	TDZE <b>569</b>
-----------------	-----------------

CATEGORY	A	B	C	D
LPV DA		979-1 3/8	410 (500-1 3/8)	
LNAV/VNAV DA		1052-1 5/8	483 (500-1 5/8)	
LNAV MDA	1020-1	451 (500-1)	1020-1 3/8	451 (500-1 3/8)
CIRCLING	1140-1 571 (600-1)	1400-1 1/4 831 (900-1 1/4)	1620-3 1051 (1100-3)	1700-3 1131 (1200-3)



SE-4, 16 MAY 2024 to 13 JUN 2024

SE-4, 16 MAY 2024 to 13 JUN 2024