

WAAS CH <b>49201</b> W18A	APP CRS <b>181°</b>	Rwy ldg <b>6502</b> TDZE <b>298</b> Apt Elev <b>298</b>
---------------------------------	------------------------	---

**RNAV (GPS) RWY 18**  
HATTIESBURG/LAUREL RGNL (PIB)

RNP APCH-GPS.

**T** **A** For uncompensated Baro-VNAV systems, LNAV/VNAV NA below -15°C or above 54°C.

MALSR

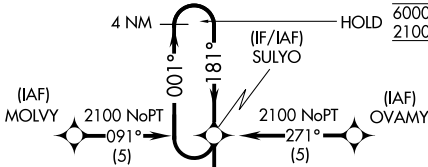
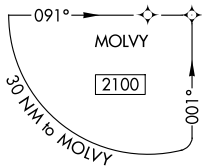


MISSED APPROACH:  
Climb to 2000 direct  
REWYO and hold.

AWOS-3PT  
**128.325**

HOUSTON CENTER  
**126.8 327.8**

UNICOM  
**123.0 (CTAF) 1**



(FAF) MOWLI

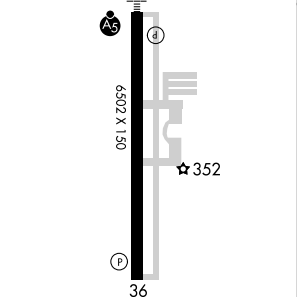
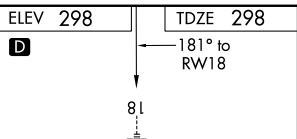
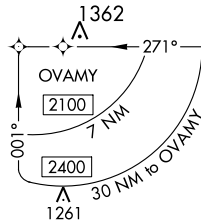
448

RW18

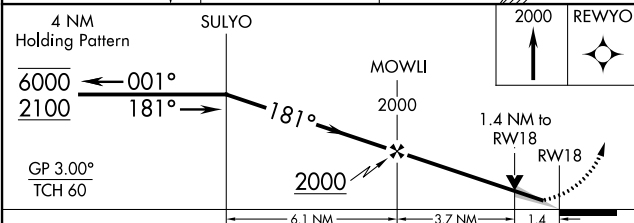
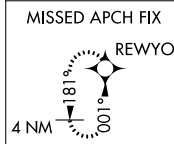
Δ 1038

Δ 758

Δ 1046



HIRL Rwy 18-36 1  
REIL Rwy 18 and 36 1



CATEGORY	A	B	C	D
LPV DA		498-1/2	200 (200-1/2)	
LNAV/VNAV DA		691-5/8	393 (400-3/8)	
LNAV MDA	820-1/2	522 (600-1/2)	820-1	522 (600-1)
<b>C</b> CIRCLING	820-1	522 (600-1)	1120-2/2 822 (900-2/2)	1120-2 3/4 822 (900-2 3/4)

SC-4, 16 MAY 2024 to 13 JUN 2024

SC-4, 16 MAY 2024 to 13 JUN 2024